

# GROVEWOOD GARDENS

## KINGS NORTON, BIRMINGHAM

### PLOTS 1 & 2

#### GROUND FLOOR

Hallway  
 Lounge  
 4.1m x 4.22m  
 Kitchen / Dining / Family room  
 4m x 6.42m  
 W.C.

#### FIRST FLOOR

Landing  
 Master Bedroom  
 2.97m x 3.7m (12.6sqm)  
 Bedroom Two  
 2.97m x 3.3m (11.7sqm)  
 Bedroom Three  
 2.3m x 4.3m (9.89sqm)  
 Bedroom Four  
 2m x 2m (4sqm)  
 Bathroom

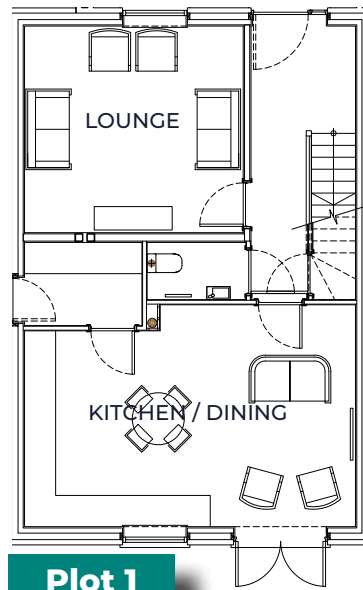
### PLOT 3

#### GROUND FLOOR

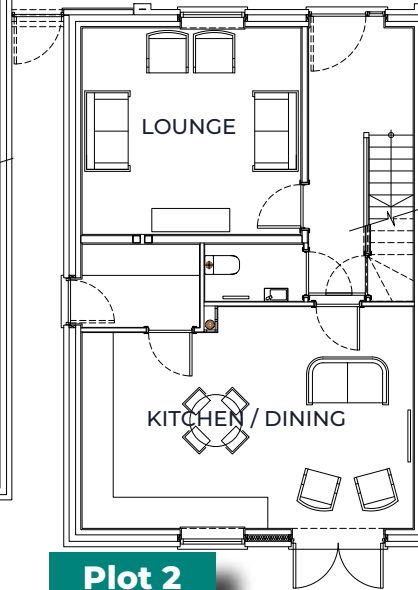
Hallway  
 Kitchen  
 3.6m x 2.96m  
 Lounge / Dining  
 3.4m x 5.2m  
 W.C.

#### FIRST FLOOR

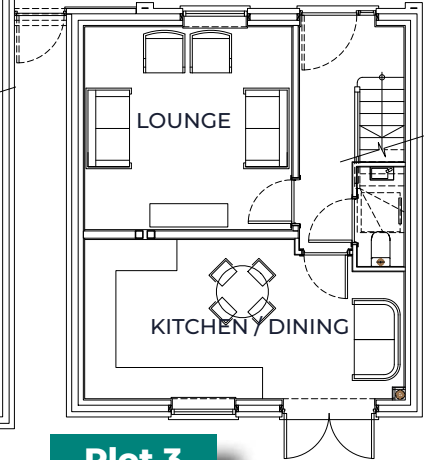
Landing  
 Bedroom one  
 1.55m x 4.89m  
 Bedroom Two  
 4.5m x 2.83m  
 Bathroom



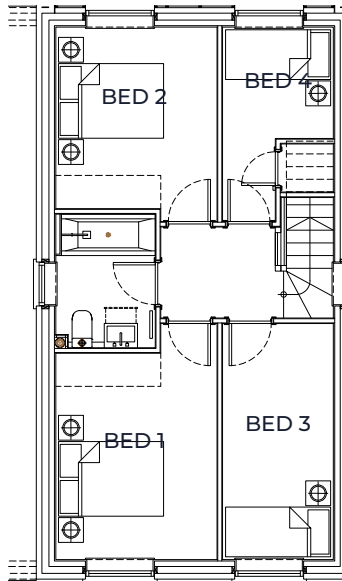
Plot 1



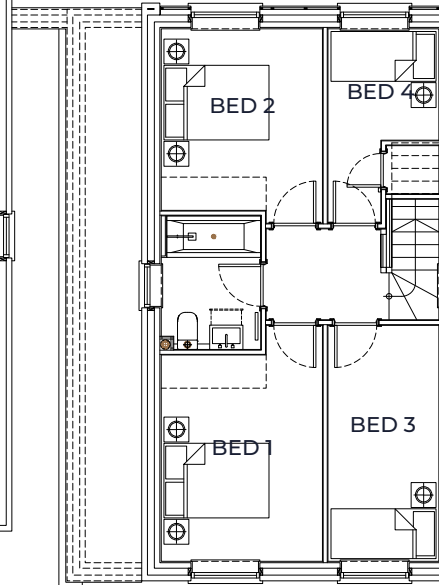
Plot 2



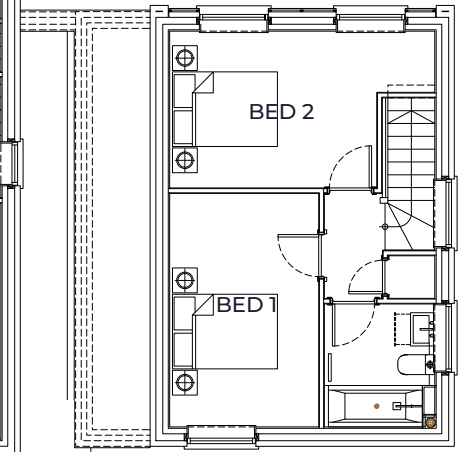
Plot 3



Plot 1



Plot 2



Plot 3

