



smarthomes

Anderton Road

Sparkbrook, Birmingham

- An Incredibly Spacious Mid-Terrace Family Home
- Seven Bedrooms
- Two Large Reception Rooms
- Family Bathroom & Three Separate W.C's

Auction Guide Price £300,000

Current EPC Rating - E

Current Council Tax Band - C

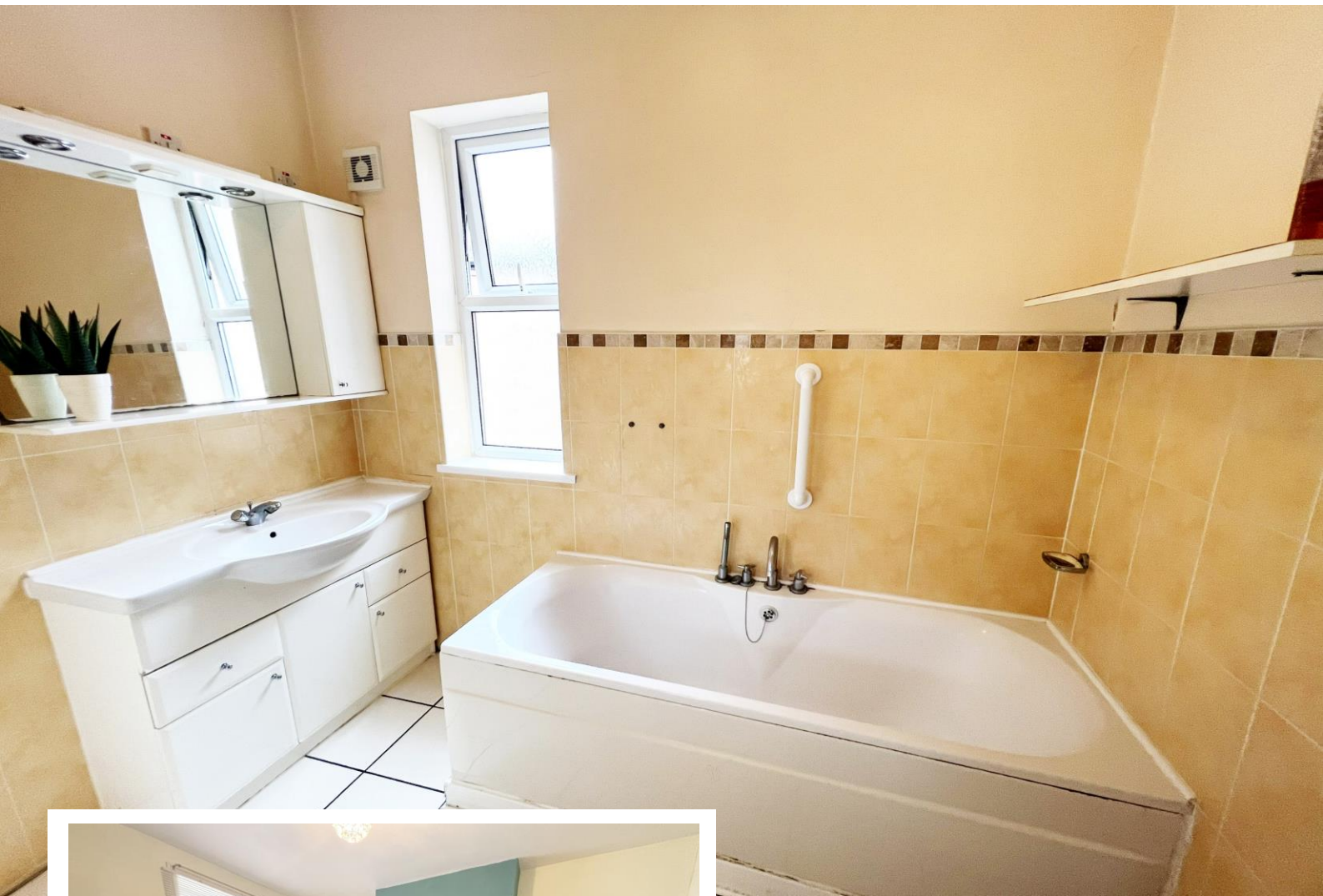




Property Description

A fantastic opportunity to purchase this mid terraced period property which is situated over three floors and briefly affords seven bedrooms, two large reception rooms, kitchen, three guest W.C's, cellar, bathroom and private rear garden. This property provides great potential for a large family home or investment opportunity





Rooms & Measurements

Reception Room One to Rear 4.2m x 3.9m (13'9" x 12'9")

Reception Room Two to Front 6.4m (into bay) x 3.8m (20'11" x 12'5")

Kitchen 5.3m x 3.4m (17'4" x 11'1")

Bedroom One to Rear 3.8m x 3.4m (12'5" x 11'1")

Bedroom Two to Rear 4.3m x 3.9m (14'1" x 12'9")

Bedroom Three to Front 5.4m x 3.9m (17'8" x 12'9")

Bedroom Four to Front 2.7m x 1.7m (8'10" x 5'6")

Bathroom 2.6m x 2.3m (8'6" x 7'6")

Bedroom Five to Rear 4.4m x 4.1m (14'5" x 13'5")

Bedroom Six to Front 5.5m x 2.9m (18'0" x 9'6")

Bedroom Seven to Front 4.5m x 2.8m (14'9" x 9'2")

Tenure

We are advised by the vendor that the property is freehold. We would advise all interested parties to obtain verification through their own solicitor or legal representative.

EPC supplied by vendor. Current council tax band – C



316 Stratford Road
 Shirley
 Solihull
 B90 3DN

www.smart-homes.co.uk
 0121 744 4144

Agents Note: Whilst every care has been taken to prepare these particulars, they are for guidance purposes only. We believe all information to be correct from the day of marketing however, we advise and recommend that your conveyancer and or surveyor verifies all information supplied. All measurements are approximate and are for general guidance purposes only and whilst every care has been taken to ensure their accuracy, they should not be relied upon and potential buyers are advised to recheck the measurements.