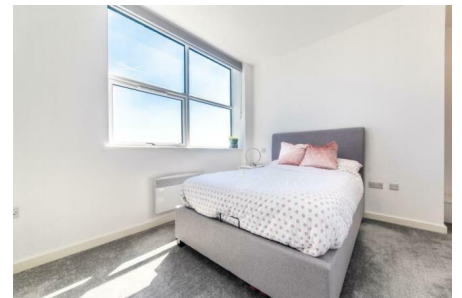
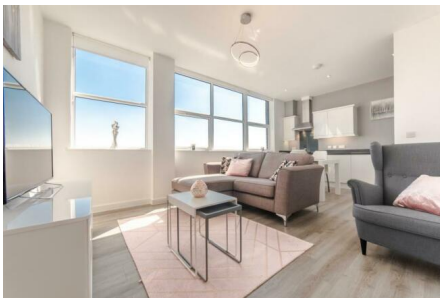


## Century House, Stratford Road, Shirley

£210,000

🛏️ 2 🚿 2 🚻 1



**23 Century Court** - An immaculately presented top floor apartment in a convenient location benefitting from open plan lounge/kitchen/diner, two double bedrooms, modern en-suite shower room, further modern shower room and allocated parking

3 Union Road, Shirley, Solihull B90 3BT

sales • new homes • land • commercial • mortgages • auction

## Key Features

- An Immaculately Presented Top Floor Apartment
- Two Modern Shower Rooms
- Allocated Parking
- Two Double Bedrooms
- Open Plan Lounge/Kitchen/Diner
- Situated in a Most Convenient Location
- 
- 



3 Union Road, Shirley, Solihull B90 3BT

sales • new homes • land • commercial • mortgages • auction