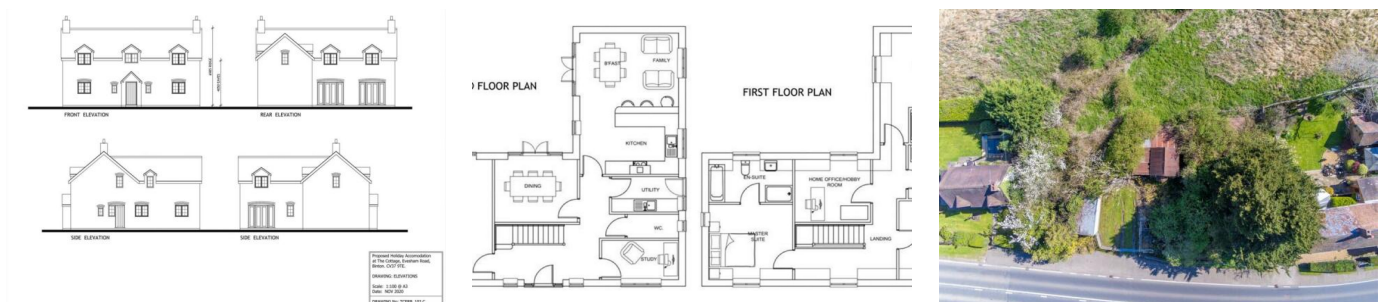


Evesham Road, Binton, Stratford-upon-Avon

£175,000

 4  3  3



Lot B - Building Plot - A plot of land with planning consent granted by Stratford-on-Avon District Council to allow for the demolition of all the existing buildings on site and the construction of a holiday home (detached with four bedrooms and three bathrooms) with an approximate gross internal floor area of 1,900 sq. ft.

3 Union Road, Shirley, Solihull B90 3BT

sales • new homes • land • commercial • mortgages • auction

Key Features

- A Plot of Land with Planning Consent
- A Detached Property for Holiday Home Use
- Four Bedrooms
- Three Bathroom
- Three Reception Rooms
- Off Road Parking
-
-

