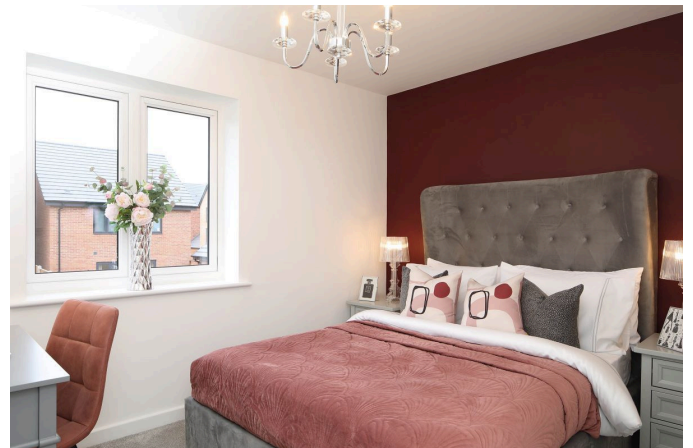


## Solihull, B90 8AT

£500,000

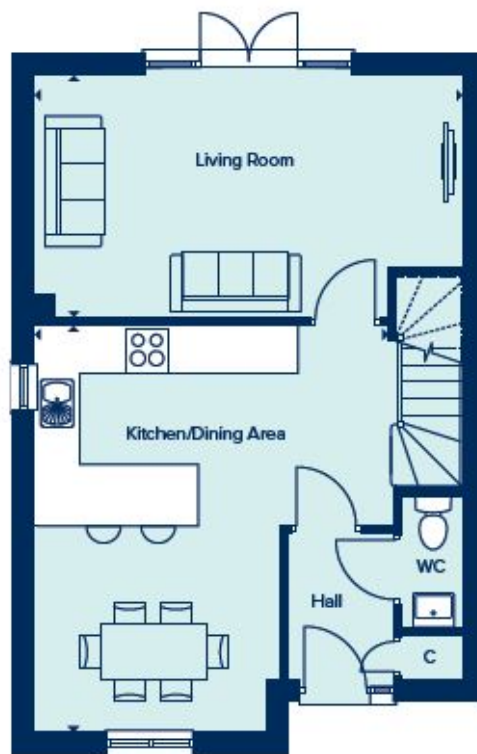
🛏 4 🚿 2 🚻 1



3 Union Road, Shirley, Solihull B90 3BT

sales • new homes • land • commercial • mortgages • auction

- Built-in wardrobe to bedroom 1
- En suite to bedroom 1
- Integrated appliances
- Single garage and two parking spaces
- Separate living room
- Detached property
- French doors open out to a West facing garden
- Open plan kitchen/dining area
- Four bedrooms (Two double bedrooms)
- U-shaped kitchen



The Sabino, is an elegant four-bedroom family home showcasing a spacious living room with French doors to the garden and sizeable kitchen/dining area complete with breakfast bar. The first floor features two double rooms and two single rooms, with bedroom 1 benefitting from an en-suite and built-in wardrobe. The property also has a single garage and two parking spaces.

**WEST FACING GARDEN!**

3 Union Road, Shirley, Solihull B90 3BT

sales • new homes • land • commercial • mortgages • auction