



smarthomes

Kedleston Road

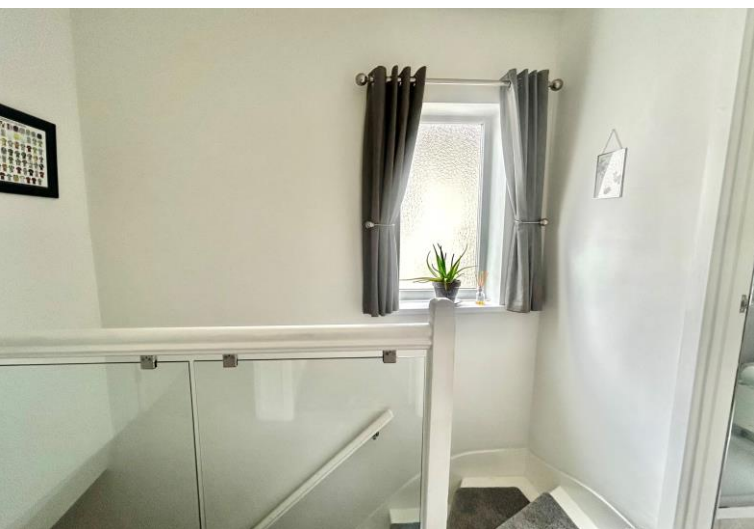
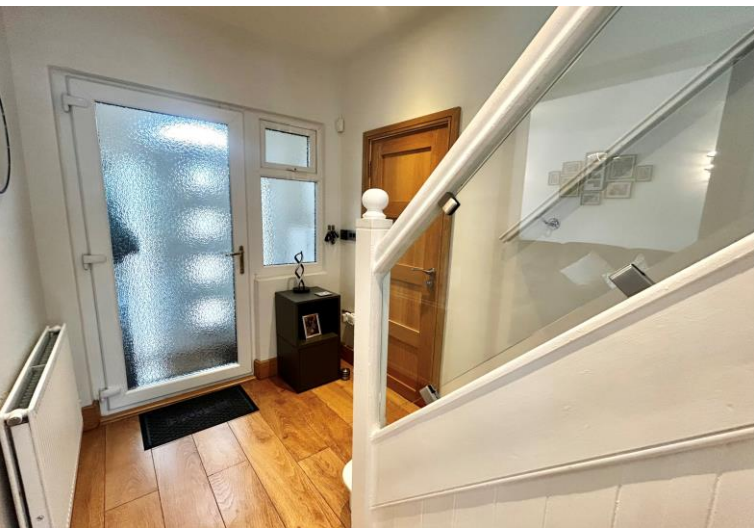
Hall Green, Birmingham

- A Beautifully Presented Three Bedroom Family Home
- Re-Fitted Open Plan Kitchen & Ground Floor Shower Room
- West Facing Rear Garden
- Re-Fitted Four Piece Family Bathroom

£340,000

Current EPC Rating - C
Current Council Tax Band - C





Property Description

A beautifully presented semi-detached family home situated in a most convenient location and offering accommodation comprising lounge, extended open plan family kitchen/diner, modern ground floor shower room, three bedrooms, spacious modern family bathroom, West facing garden and driveway parking



Rooms & Measurements

Lounge to Front - 3.33m x 3.18m (10'11" x 10'5")

Re-Fitted Open Plan Family Kitchen to Rear - 5.08m x 3.66m (16'8" x 12'0")

Modern Ground Floor Shower Room

Bedroom One to Front - 3.33m x 3.18m (10'11" x 10'5")

Bedroom Two to Rear - 3.66m x 3.28m (12'0" x 10'9")

Bedroom Three to Front - 2.39m x 1.68m (7'10" x 5'6")

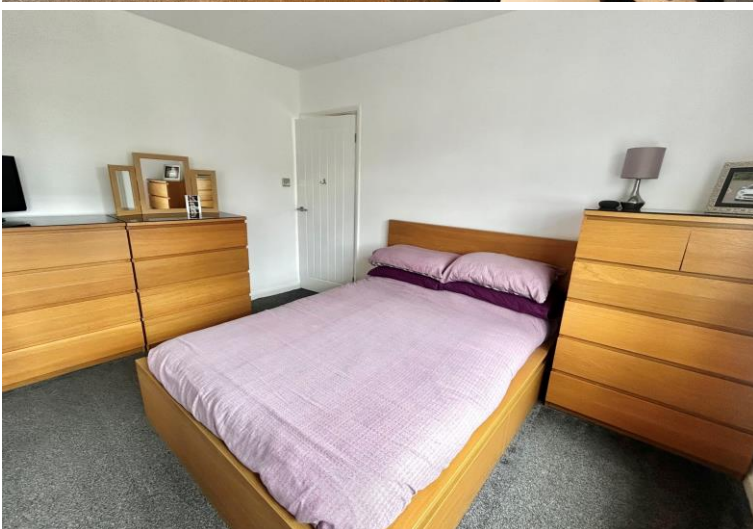
Spacious Re-Fitted Family Bathroom to Rear - 3.33m x 2.01m (10'11" x 6'7")

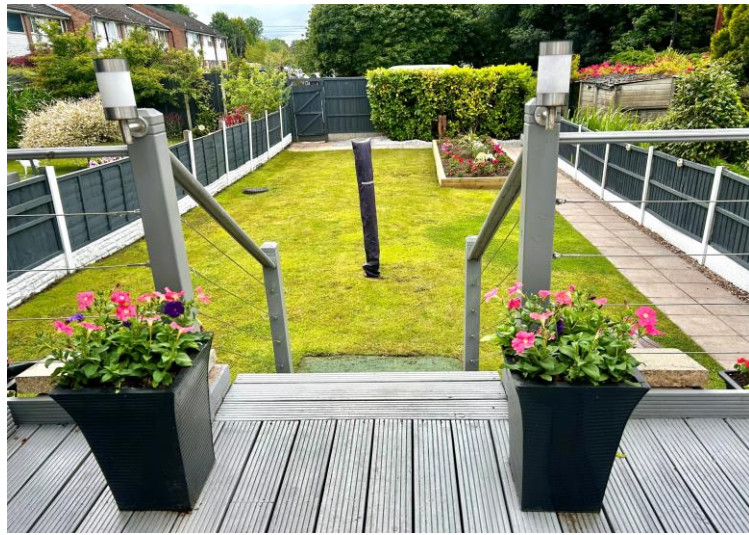
Utility Room - 3.15m x 1.7m (10'4" x 5'7")

Tenure

We are advised by the vendor that the property is freehold. We would advise all interested parties to obtain verification through their own solicitor or legal representative.

EPC supplied by vendor. Current council tax band – C





316 Stratford Road
 Shirley
 Solihull
 B90 3DN

www.smart-homes.co.uk
 0121 744 4144

Agents Note: Whilst every care has been taken to prepare these particulars, they are for guidance purposes only. We believe all information to be correct from the day of marketing however, we advise and recommend that your conveyancer and or surveyor verifies all information supplied. All measurements are approximate and are for general guidance purposes only and whilst every care has been taken to ensure their accuracy, they should not be relied upon and potential buyers are advised to recheck the measurements.