

Solihull, B90 8AT

£455,000

3 2 1



LAST LAVENA HOME AVAILABLE!

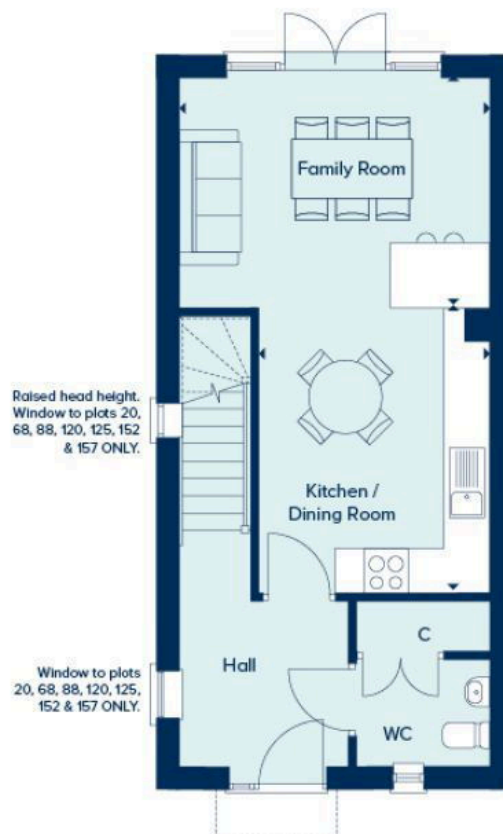
We proudly present this 3 storey house - offering 3 bedrooms and 2 bathrooms.

A Beautiful home - The ground floor of the Lavena is dominated by an impressive open plan dining/kitchen with breakfast bar and family room opening onto the garden through French doors. The first floor has a double bedroom with en-suite shower room and built-in wardrobes and a living room. On the top floor two double bedrooms share a family bathroom. There is also a single garage and two parking spaces.

3 Union Road, Shirley, Solihull B90 3BT

sales • new homes • land • commercial • mortgages • auction

- Built-in wardrobe to bedroom 1
- En suite to bedroom 1
- Integrated appliances
- Single garage and two parking spaces
- Separate living room
- Detached property
- French doors open out to a West facing garden
- Open plan kitchen/dining area
- Four bedrooms (Two double bedrooms)
- U-shaped kitchen



3 Union Road, Shirley, Solihull B90 3BT

sales • new homes • land • commercial • mortgages • auction