

The Elms - The Ennerdale, Shaftmoor Lane, Hall Green

£384,950

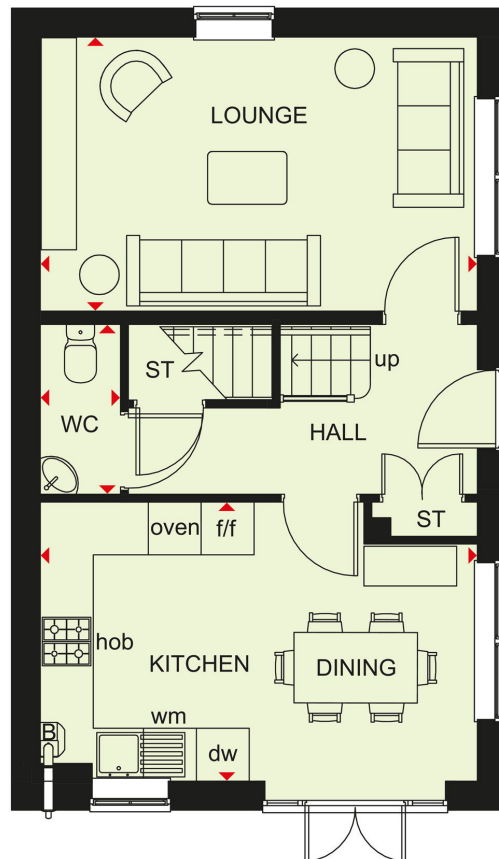
3 2 1



3 Union Road, Shirley, Solihull B90 3BT

sales • new homes • land • commercial • mortgages • auction

- Brand New Detached Family Home
- Energy Efficient EPC A/B
- Five Star Developer NHBC
- Open Plan Kitchen and Dining
- Master Bedroom with En-Suite
- £19,249 Deposit Boost
- Dual Aspect Lounge
- Two parking spaces
- Contribution towards flooring - worth £3,849*
- Book your appointment today



The Ennerdale is a beautiful three bedroom energy efficient detached home. The welcoming hallway has a cloakroom and useful storage area. Large windows and French doors light up the open-plan kitchen/diner and spacious lounge. Upstairs wake up in the airy main bedroom that benefits from an en suite shower room. A further double bedroom, single bedroom and a modern family bathroom complete this home. This fabulous new home comes with £19,249 Deposit Boost and Contribution towards flooring - worth £3,849*

3 Union Road, Shirley, Solihull B90 3BT

sales • new homes • land • commercial • mortgages • auction