



smarthomes

The Centreway

Yardley Wood, Birmingham

- A Spacious Three Bedroom Mid Terrace Property
- Requiring Some Modernisation
- Delightful Rear Garden
- No Upward Chain

£180,000

Current EPC Rating 67 (D)
Current Council Tax Band B





Property Description

A spacious mid-terrace property requiring some updating but being sold with the benefit of no upward chain. Offering accommodation comprising; a lounge, fitted kitchen, ground floor bathroom, three good size bedrooms and delightful rear garden.

Recent Structural Appraisal Available At Property. Copy Available From Selling Agent.

Tenure

We are advised by the vendor that the property is freehold. We would advise all interested parties to obtain verification through their own solicitor or legal representative. EPC supplied by Nigel Hodges.



Rooms & Measurements

Entrance Hallway

Lounge to Front - 4.27m x 3.58m (14'0" x 11'9")

Fitted Kitchen to Rear - 2.84m x 2.82m (9'4" x 9'3")

Inner Lobby

Ground Floor Bathroom to Rear - 1.85m x 1.6m (6'1" x 5'3")

Bedroom One to Front - 5.23m max x 3.18m (17'2" max x 10'5")

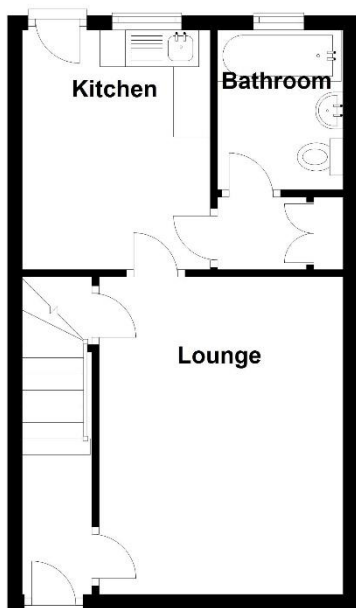
Bedroom Two to Rear - 3.96m x 2.9m (13'0" x 9'6")

Bedroom Three to Rear - 2.9m x 2.24m (9'6" x 7'4")

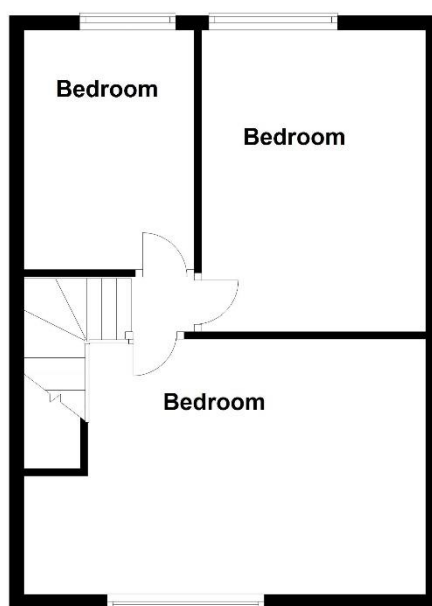
Delightful Rear Garden



Ground Floor



First Floor



Total area: approx. 75.5 sq. metres (813.0 sq. feet)

316 Stratford Road
Shirley
Solihull
B90 3DN

www.smart-homes.co.uk
0121 744 4144

Agents Note: Whilst every care has been taken to prepare these particulars, they are for guidance purposes only. We believe all information to be correct from the day of marketing however, we advise and recommend that your conveyancer and or surveyor verifies all information supplied. All measurements are approximate are for general guidance purposes only and whilst every care has been taken to ensure their accuracy, they should not be relied upon and potential buyers are advised to recheck the measurements.