



smarthomes

Billingsley Road Sheldon, Birmingham

- A Three Bedroom End Terrace Property
- Three Good Size Bedrooms
- Two Reception Rooms
- Breakfast Kitchen

£215,000

Current EPC Rating - TBC
Current Council Tax Band - B





Property Description

A three bedroom end terrace property benefitting from three good size bedrooms, two reception rooms, breakfast kitchen, family bathroom, rear lobby with gardeners WC and storage, South East facing rear garden and garage



Rooms & Measurements

Entrance Hall

Lounge to Front - 3.58m x 4.37m (11'9" x 14'4")

Dining Room to Rear - 2.24m x 2.82m (7'4" x 9'3")

Breakfast Kitchen to Rear - 3.84m x 2.31m (12'7" x 7'7")

Bedroom One to Front - 3.76m x 3.4m (12'4" x 11'2")

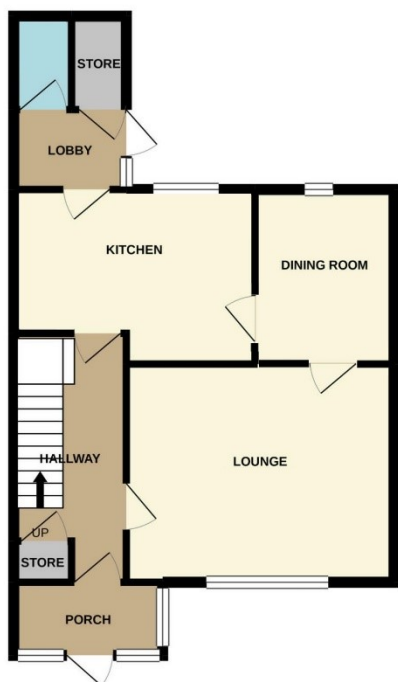
Bedroom Two - 3.73m x 2.34m (12'3" x 7'8")

Bedroom Three to Front - 2.36m x 2.54m (7'9" x 8'4")

Family Bathroom to Rear - 2.36m x 1.52m (7'9" x 5'0")

Tenure

We are advised by the vendor that the property is freehold. We would advise all interested parties to obtain verification through their own solicitor or legal representative. EPC supplied by Nigel Hodges. Current council tax band – B



316 Stratford Road
 Shirley
 Solihull
 B90 3DN

www.smart-homes.co.uk
 0121 744 4144

Agents Note: Whilst every care has been taken to prepare these particulars, they are for guidance purposes only. We believe all information to be correct from the day of marketing however, we advise and recommend that your conveyancer and or surveyor verifies all information supplied. All measurements are approximate are for general guidance purposes only and whilst every care has been taken to ensure their accuracy, they should not be relied upon and potential buyers are advised to recheck the measurements.