



Hartfield Crescent, Acocks Green

£150,000

3 1 1

- An End-Terrace Family Home
- Requiring Modernisation Throughout
- Three Bedrooms
- No Upward Chain
- Lounge
- Kitchen
- Ground Floor Bathroom
- West Facing Rear Garden
- Driveway Parking
- Freehold. Council Tax Band - B. EPC Rating - G.



Lounge to Front - 5.21m x 3.73m (17'1" x 12'3")

Kitchen to Rear - 3.05m x 2.77m (10'0" x 9'1")

Ground Floor Bathroom to Rear - 2.74m x 1.4m (9'0" x 4'7")

Bedroom One to Front - 3.73m x 3.12m (12'3" x 10'3")

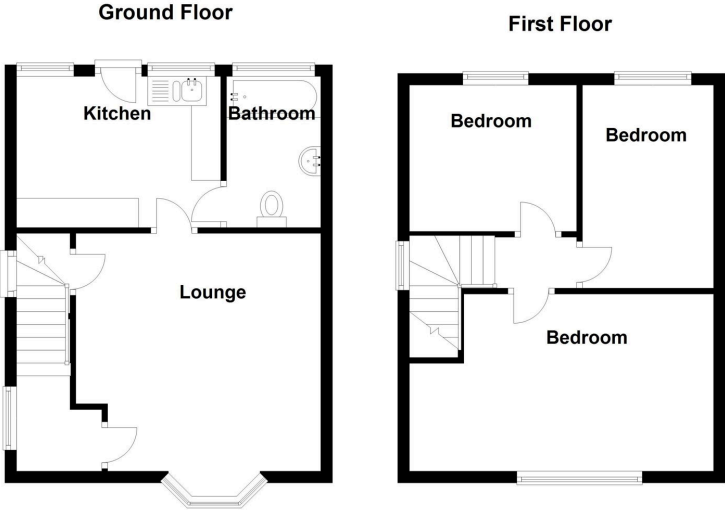
Bedroom Two to Rear - 3.76m x 2.36m (12'4" x 7'9")

Bedroom Three to Rear - 2.77m x 2.16m (9'1" x 7'1")

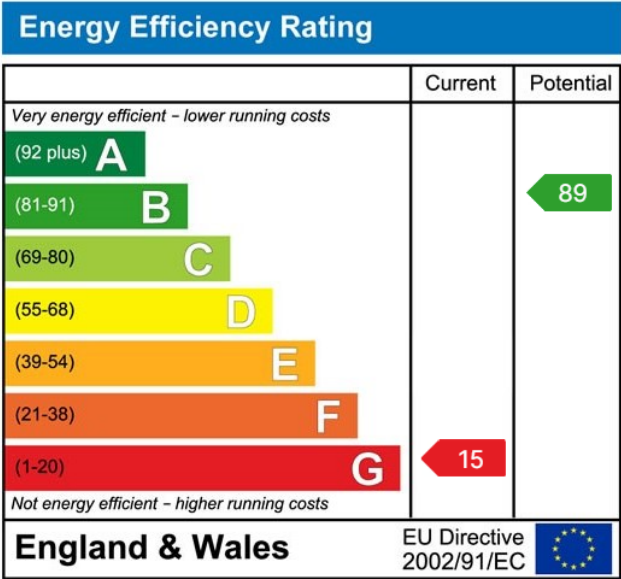
Tenure

We are advised by the vendor that the property is freehold. We would advise all interested parties to obtain verification through their own solicitor or legal representative. EPC supplied by Nigel Hodges. Current council tax band – B





Total area: approx. 69.6 sq. metres (749.1 sq. feet)



316 Stratford Road, Shirley, Solihull B90 3DN

sales • new homes • land • commercial • mortgages • auction

Registered Company in England and Wales. Company No 03591917
 Registered Office: JHS Ltd, 316 Stratford Road, Shirley, Solihull B90 3DN