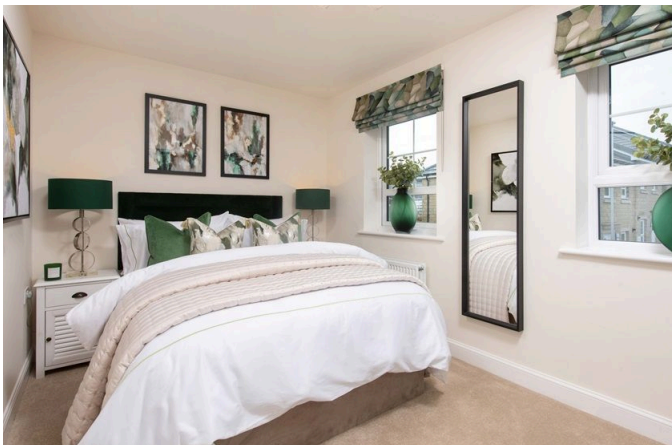


## The Elms, Shaftmoor Lane, Hall Green, Birmingham, West Midlands, B28 8SN

£279,995

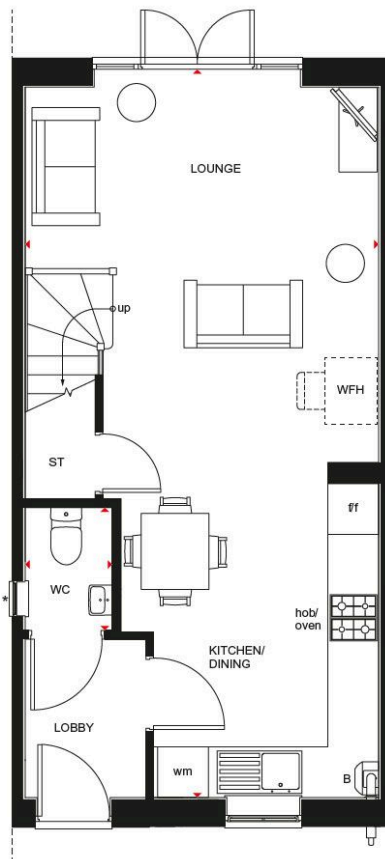
🛏️ 2 🚿 1 🚗 1



3 Union Road, Shirley, Solihull B90 3BT

sales • new homes • land • commercial • mortgages • auction

- Located Close to Shops and Public Transport
- Two parking spaces
- A/B EPC Rating
- Photovoltaic Panels
- Ideal for First Time Buyers or Investors
- 5% deposit boost worth £13,999
- Argon Filled Double Glazing
- Two Double Bedrooms
- Open Plan Kitchen/Diner and Living Space
- Gas Fired Central Heating



The Denford is a stylish two bedroom home - perfect for first-time buyers and downsizers. The open-plan ground floor welcomes a kitchen / diner and living area, complete with French doors inviting natural light into your home. Head upstairs and you'll see the family bathroom, as well as two double spacious double bedrooms each side.

3 Union Road, Shirley, Solihull B90 3BT

sales • new homes • land • commercial • mortgages • auction