



smarthomes

Medina Road
Tyseley, Birmingham

- A Well Maintained Two Bedroom Property
- Extended Fitted Kitchen & Family Shower Room
- East Facing Rear Garden
- Two Reception Rooms

Offers in Region of £165,000

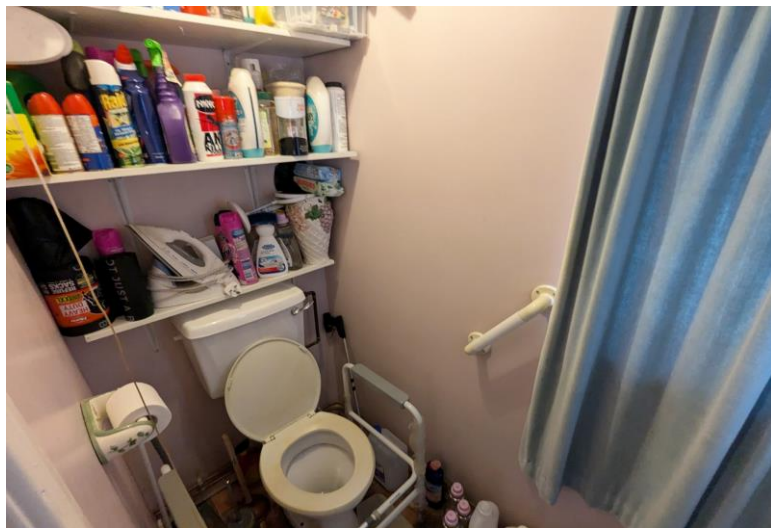
Current EPC Rating - TBC
Current Council Tax Band - A





Property Description

A well maintained and extended mid-terrace property situated in a most convenient location and offering accommodation comprising two reception rooms, extended fitted kitchen, guest W.C, two bedrooms, shower room and an East facing rear garden



Rooms & Measurements

Reception Room One to Front 4.47m max x 3.4m (14'8" max x 11'2")

Reception Room Two to Rear 3.73m x 3.38m (12'3" x 11'1")

Extended Fitted Kitchen 5.46m x 1.7m (17'11" x 5'7")

Guest W.C

Bedroom One to Front 3.73m x 3.4m (12'3" x 11'2")

Bedroom Two to Rear 3.73m max x 2.44m (12'3" max x 8'0")

Shower Room to Rear 3.15m x 1.8m (10'4" x 5'11")

Tenure

We are advised by the vendor that the property is freehold. We would advise all interested parties to obtain verification through their own solicitor or legal representative.

EPC supplied by Nigel Hodges.

Current council tax band – A



316 Stratford Road
Shirley
Solihull
B90 3DN

www.smart-homes.co.uk
0121 744 4144

Agents Note: Whilst every care has been taken to prepare these particulars, they are for guidance purposes only. We believe all information to be correct from the day of marketing however, we advise and recommend that your conveyancer and or surveyor verifies all information supplied. All measurements are approximate are for general guidance purposes only and whilst every care has been taken to ensure their accuracy, they should not be relied upon and potential buyers are advised to recheck the measurements.