

Plot 1 , Norton Court, Wharf Road, Kings Norton, Birmingham

From £260,000

🛏 2 🍳 1 🚗 1



This delightful 2 bedroomed townhouse offers a perfect blend of comfort and practicality, ideal for modern living . With a thoughtfully designed layout and quality finishes, this home provides everything you need for a convenient lifestyle.

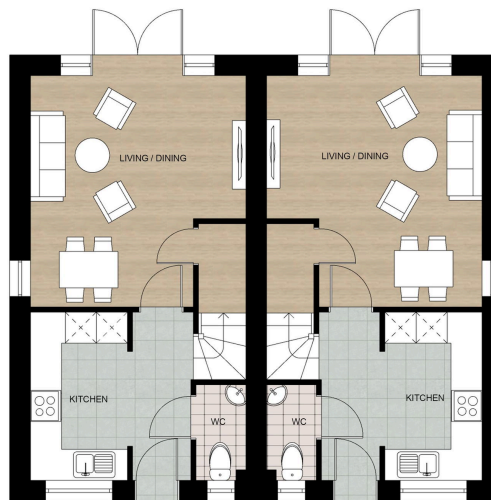
3 Union Road, Shirley, Solihull B90 3BT

sales • new homes • land • commercial • mortgages • auction

Key Features

- Brand new development
- Bathroom with Jack and Jill design
- Great access to Birmingham City Centre
- Contemporary Design
- Two double bedrooms
- Close to shops and restaurants
- One of only two 2 bedroomed properties
- Lounge with access to the garden

PLOT 1 & 2 - GF



GROUND FLOOR PLAN

3 Union Road, Shirley, Solihull B90 3BT

sales • new homes • land • commercial • mortgages • auction