



smarthomes

Lock House, Waterside

Dickens Heath, Solihull

- A Beautifully Presented Two Bedroom Apartment
- Modern Open Plan Fitted Kitchen/Diner/Lounge
- Modern En-Suite Shower Room & Family Bathroom
- Secure Allocated Parking Space

£215,000

Current EPC Rating - B
Current Council Tax Band - C





Property Description

A beautifully presented second floor apartment situated in the popular Waterside development in Dickens Heath. Offering spacious accommodation comprising an open plan lounge/kitchen/diner, two good size bedrooms, en-suite shower room, bathroom and secure underground allocated parking space

Dickens Heath village offers a contemporary life style with a superb range of family homes and apartments, restaurants, offices, shops, medical surgeries as well as a local library, village hall and village green to provide that community lifestyle. Set within easy access to the M42 and train stations the village is ideal for families and commuters.



Rooms & Measurements

Open Plan Lounge/Kitchen/Diner 7.39m x 3.99m
(24'3" x 13'1")

Bedroom One 3.99m x 2.74m (13'1" x 9'0")

En-Suite Shower Room 1.6m x 1.45m (5'3" x 4'9")

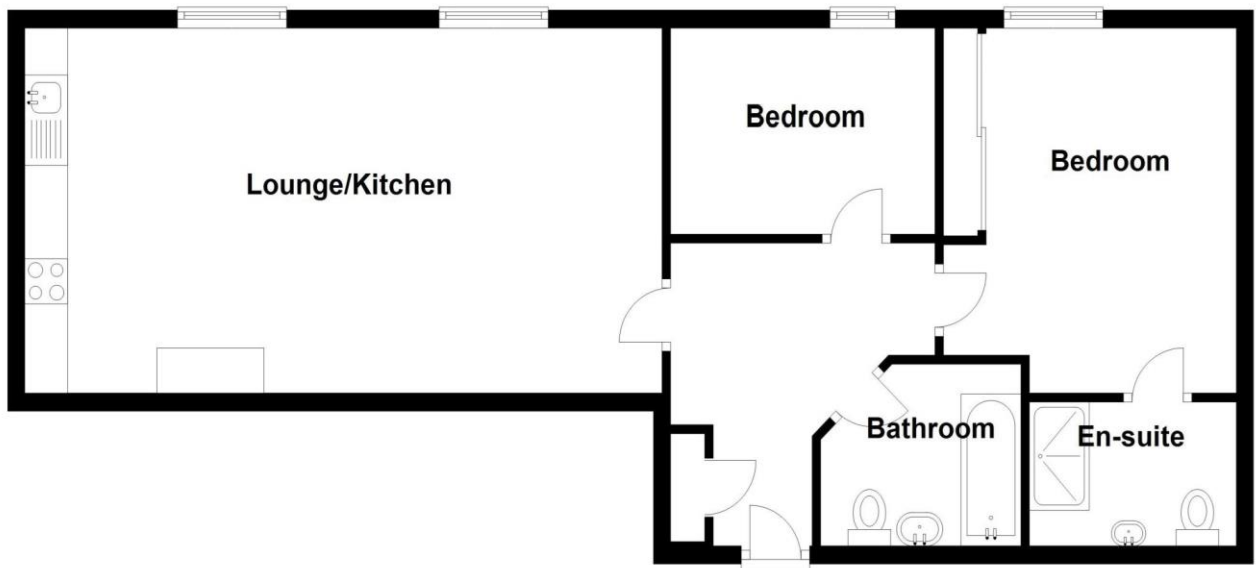
Bedroom Two 3.1m x 2.29m (10'2" x 7'6")

Modern Bathroom 1.96m x 1.45m (6'5" x 4'9")

Tenure

We are advised by the vendor that the property is leasehold with approx. 977 years remaining on the lease, a service charge of approx. £2,480 per annum and a ground rent of approx. £155 per annum. We would advise all interested parties to obtain verification through their own solicitor or legal representative. EPC supplied by Vendor.

Current council tax band – C



316 Stratford Road
Shirley
Solihull
B90 3DN

www.smart-homes.co.uk
0121 744 4144

Agents Note: Whilst every care has been taken to prepare these particulars, they are for guidance purposes only. We believe all information to be correct from the day of marketing however, we advise and recommend that your conveyancer and or surveyor verifies all information supplied. All measurements are approximate and for general guidance purposes only and whilst every care has been taken to ensure their accuracy, they should not be relied upon and potential buyers are advised to recheck the measurements.