



**smarthomes**  
PORTFOLIO COLLECTION

Bespoke, targeted and innovative marketing for your property

## Apartment 3 Imperial House, Homer Road, Solihull

From £250,000

🛏 1 🚿 1 🚪 1



0121 824 5133

[portfolio@smart-homes.co.uk](mailto:portfolio@smart-homes.co.uk)

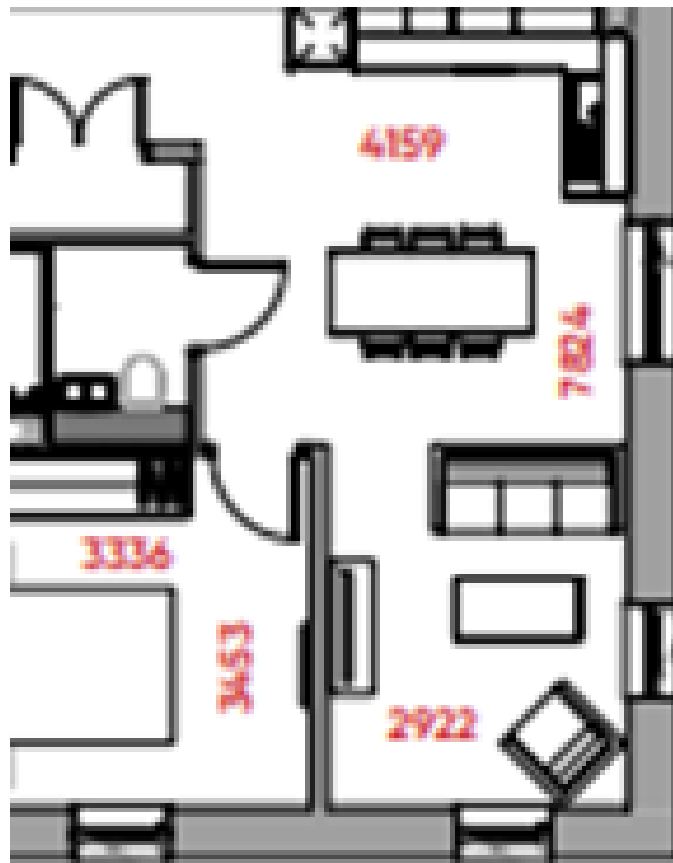
316 Stratford Road, Shirley, Solihull B90 3DN

[portfolio-collection.smart-homes.co.uk](https://portfolio-collection.smart-homes.co.uk)

Registered Company in England and Wales. Company No 03591917 Registered Office: JHS Ltd, 316 Stratford Road, Shirley, Solihull B90 3DN



- 5% Developer Gifted Deposit for First Time Buyers !!
- Fully fitted contemporary Kitchen
- Walking Distance to Solihull Town Centre
- Allocated Parking Space
- 95% Sold
- Modern designer bathroom suites
- Open plan Living
- High Standard Specification
- Secure Gated Development



SHOW APARTMENT IS NOW AVAILABLE TO PURCHASE with all fixtures and fittings included. carefully designed luxury apartment in the heart of Solihull. We highly recommend you call to view. This stunning one bedroom apartment is finished to a high standard and specification, fully equipped fitted open plan kitchen/diner, double bedroom and superbly fitted bathroom with shower. Allocated secure parking.