

Edith Walk, Malvern, WR14 4QH

£925,000

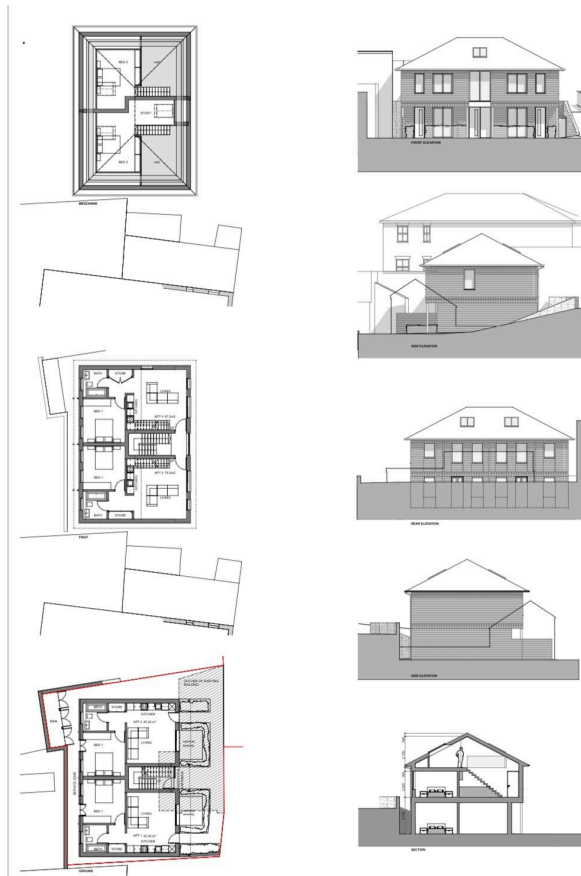
 6  4  0



- Brand New Apartment Block in Malvern Town Centre
- Fantastic for Airbnb/short term letting as well as long term letting
- Beautifully fitted bathrooms
- Freehold Block comprising 4 apartments
- Close to shops, public transport and restaurants/bars
- Great Investment Opportunity
- Fully equipped fitted kitchens
- Central heating and double glazing
- A short distance from the Malvern Hills
- Superb Location

3 Union Road, Shirley, Solihull B90 3BT

sales • new homes • land • commercial • mortgages • auction



INVESTMENT OPPORTUNITY! Don't miss your change to buy a brand new block of apartments comprising 2 x one bedroom ground floor apartments and 2 x 2 bedroom duplex apartments. The apartments are situated in the heart of Malvern close to shops, public transport and the beautiful Malvern Hills are close by. These apartments will be finished to a high specification. Fantastic rental yields.

3 Union Road, Shirley, Solihull B90 3BT

sales • new homes • land • commercial • mortgages • auction