



smarthomes

Mount Dairy Farm Lane

Cheswick Green, Solihull

- A Well Presented Two Bedroom Family Home
- Breakfast Kitchen & En-Suite Shower Room
- South Facing Rear Garden
- Driveway Parking & No Upward Chain

£310,000

Current EPC Rating - B
Current Council Tax Band - C

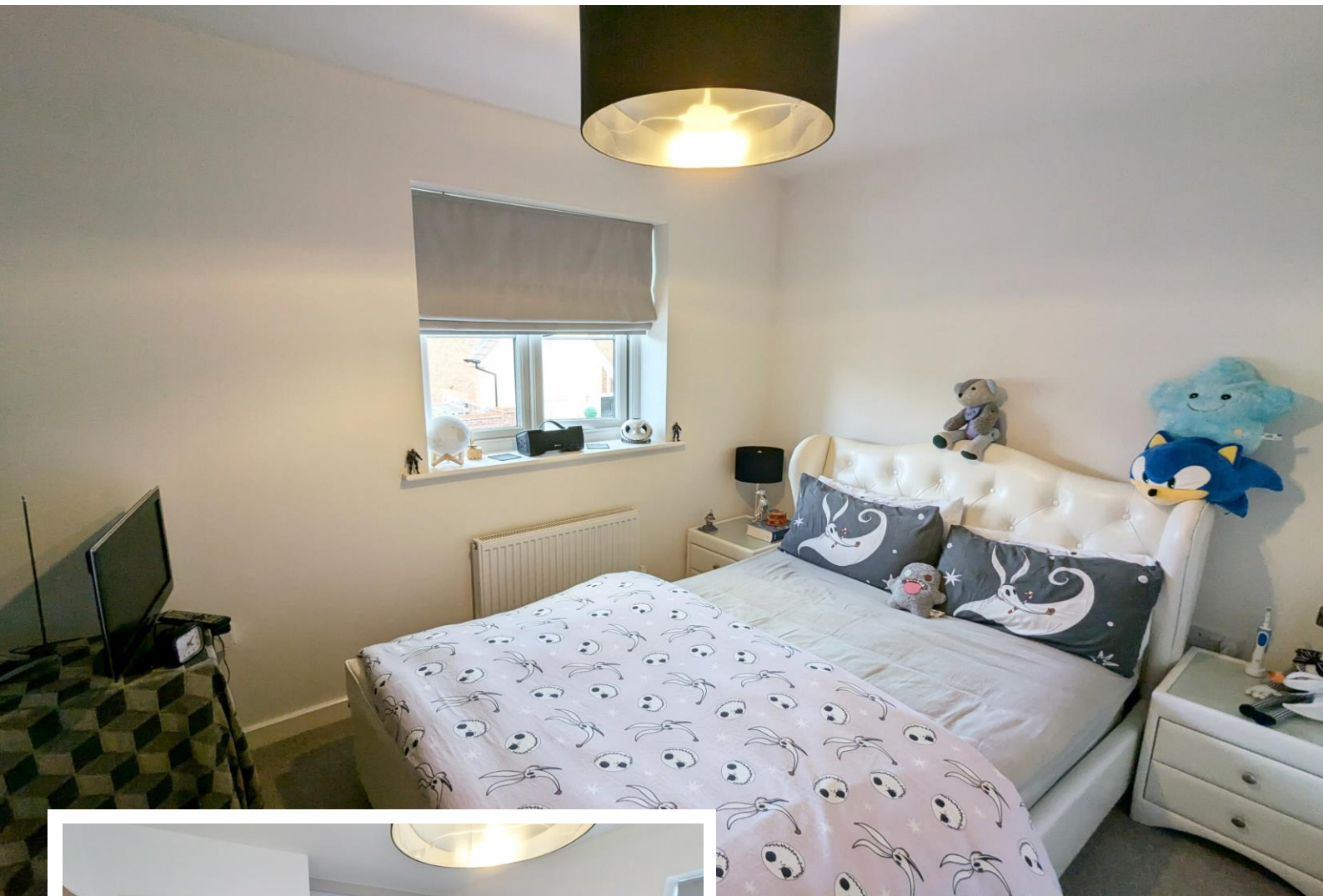




Property Description

A well presented semi-detached home benefitting from two double bedrooms, lounge, kitchen/diner, guest W.C, utility area, en-suite shower room, family bathroom, South facing rear garden and off road parking

The village of Cheswick Green is situated on the edge of Shirley and open countryside, with easy road access to the M42 motorway, NEC, Birmingham International Airport and Railway Station. There are local shops situated in Cheswick Green and a wide selection of shopping facilities can be found along the A34 Stratford Road in Shirley, on the Retail Park on Marshall Lake Road and Solihull Town Centre offers an excellent choice of shops including Touchwood Shopping Centre and John Lewis Department Store. The property currently falls within Alderbrook senior school catchment.



Rooms & Measurements

Lounge to Front 4.47m x 3.2m (14'8" x 10'6")

Kitchen/Diner to Rear 3.18m x 3m (10'5" x 9'10")

Utility Area

Guest W.C

Bedroom One to Rear 3m x 2.72m (9'10" x 8'11")

En-Suite Shower Room to Rear

Bedroom Two to Front 3.58m x 2.44m (11'9" x 8'0")

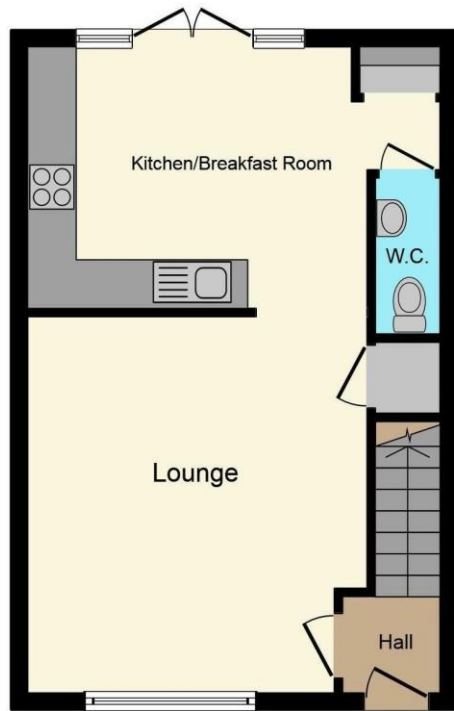
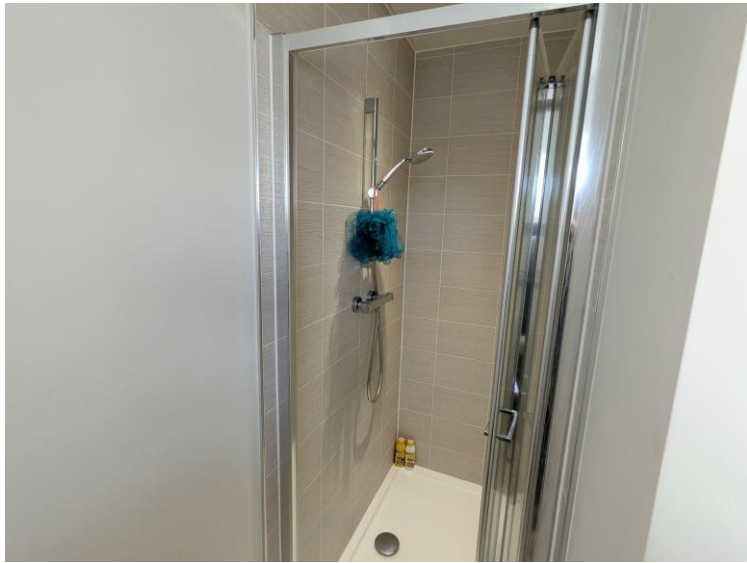
Family Bathroom

Tenure

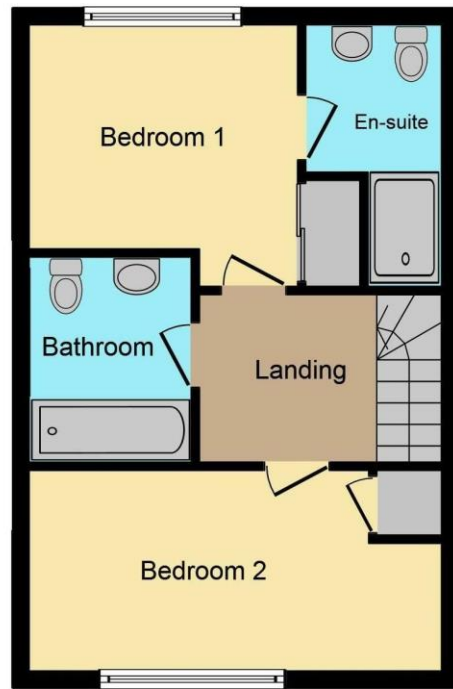
We are advised by the vendor that the property is freehold. We would advise all interested parties to obtain verification through their own solicitor or legal representative.

EPC supplied by vendor.

Current council tax band – C



Ground Floor



First Floor

316 Stratford Road
 Shirley
 Solihull
 B90 3DN

www.smart-homes.co.uk
 0121 744 4144

Agents Note: Whilst every care has been taken to prepare these particulars, they are for guidance purposes only. We believe all information to be correct from the day of marketing however, we advise and recommend that your conveyancer and or surveyor verifies all information supplied. All measurements are approximate are for general guidance purposes only and whilst every care has been taken to ensure their accuracy, they should not be relied upon and potential buyers are advised to recheck the measurements.