



smarthomes

Acheson Road

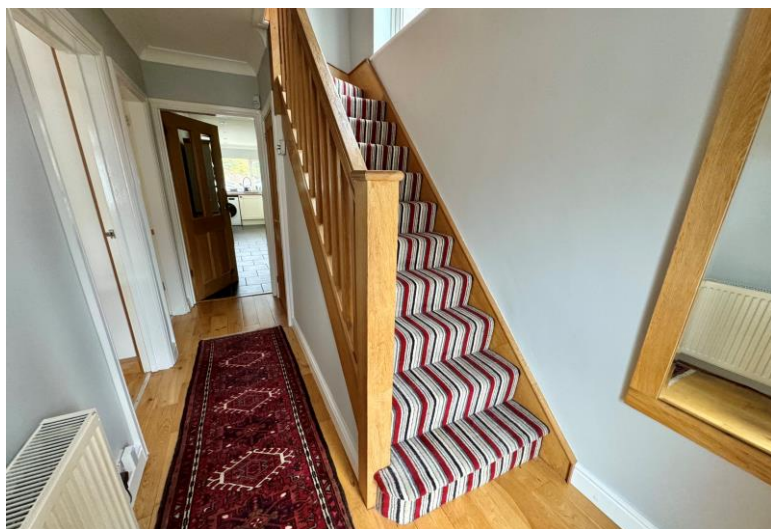
Hall Green, Birmingham

- A Very Well Presented Three Bedroom Family Home
- Extended Kitchen & Two Reception Rooms
- Landscaped Southerly Facing Rear Garden
- Driveway Parking & Rear Garage

£315,000

Current EPC Rating - D
Current Council Tax Band - C





Property Description

A very well presented semi-detached property situated in a most popular location and offering accommodation comprising two reception rooms, extended kitchen, three bedrooms, family bathroom, landscaped Southerly facing rear garden, rear garage and driveway parking



Rooms & Measurements

Dining Room to Front 3.73m x 3.43m (12'3" x 11'3")

Lounge to Rear 3.89m x 3.45m (12'9" x 11'4")

Extended Kitchen to Rear 6.55m x 1.91m (21'6" x 6'3")

Bedroom One to Rear 3.96m x 3.45m (13'0" x 11'4")

Bedroom Two to Front 3.96m x 2.46m plus wardrobes (13'0" x 8'1" plus wardrobes)

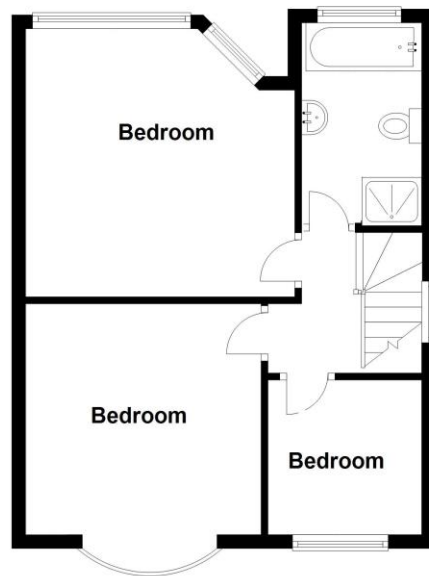
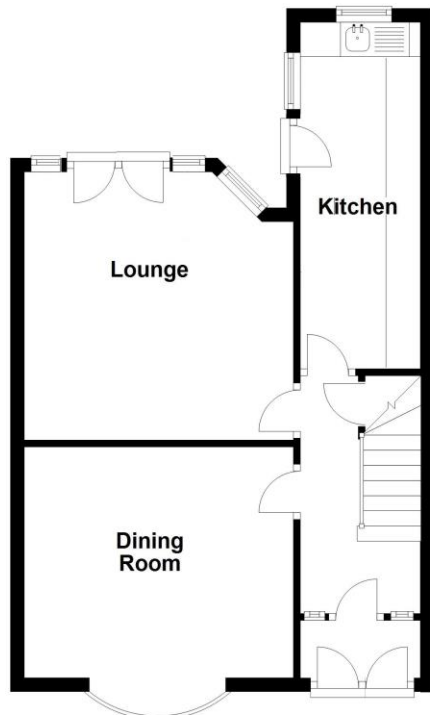
Bedroom Three to Front 2.06m x 2.03m (6'9" x 6'8")

Family Bathroom to Rear 2.82m x 1.85m (9'3" x 6'1")

Tenure

We are advised by the vendor that the property is freehold. We would advise all interested parties to obtain verification through their own solicitor or legal representative.

EPC supplied by vendor. Current council tax band – C



316 Stratford Road
Shirley
Solihull
B90 3DN

www.smart-homes.co.uk
0121 744 4144

Agents Note: Whilst every care has been taken to prepare these particulars, they are for guidance purposes only. We believe all information to be correct from the day of marketing however, we advise and recommend that your conveyancer and or surveyor verifies all information supplied. All measurements are approximate and for general guidance purposes only and whilst every care has been taken to ensure their accuracy, they should not be relied upon and potential buyers are advised to recheck the measurements.