



smarthomes

Rock Road

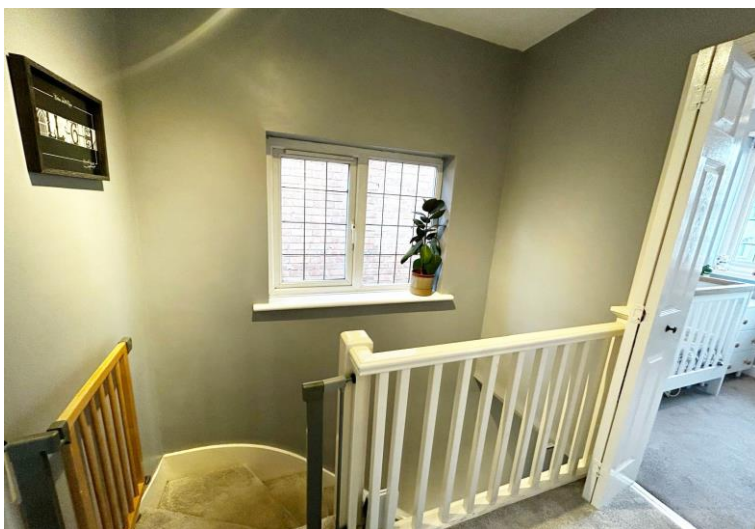
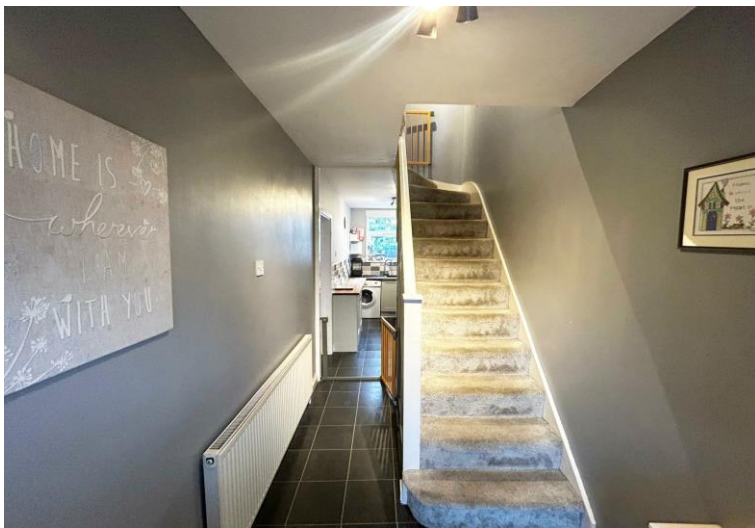
Solihull

- A Beautifully Presented Three Bedroom Family Home
- Re-Fitted Kitchen & Modern Family Bathroom
- Rear Garden & Open Rear Views Over Parkland
- Through Lounge & Large Rear Garage

£285,000

Current EPC Rating - D
Current Council Tax Band - C

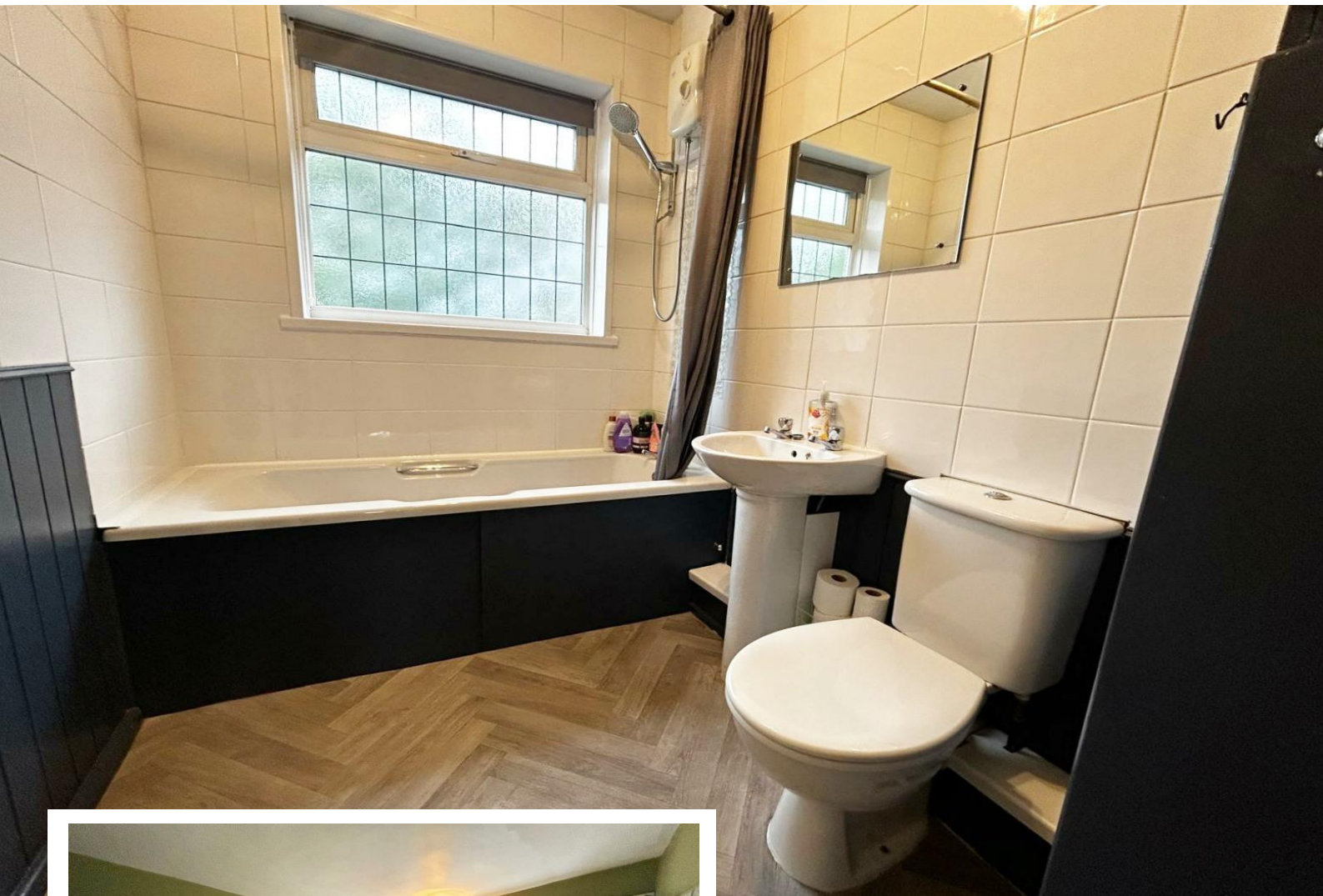




Property Description

A very well presented semi-detached family home with open views over Barn Lane recreation ground to rear. Offering accommodation comprising a through lounge/diner, re-fitted kitchen, three bedrooms, modern family bathroom, driveway parking and rear garden with large rear garage

Solihull is situated in the heart of England and is considered to be one of the most highly sought after residential areas in the country boasting a range of local amenities including excellent schools, colleges, parks, restaurants, bars and an excellent variety of shopping centres including Touchwood shopping centre and Resorts World. Solihull has convenient road networks linking the M42, M6, M40, M1 and M5 giving easy access to the NEC Arena, Birmingham International Airport and Railway Station.



Rooms & Measurements

- Through Lounge/Diner 8.61m x 3m (28'3" x 9'10")
- Re-Fitted Kitchen to Rear 3.43m x 1.7m (11'3" x 5'7")
- Bedroom One to Rear 4.32m x 3.02m (14'2" x 9'11")
- Bedroom Two to Front 4.09m x 2.97m (13'5" x 9'9")
- Bedroom Three to Front 2.21m x 1.75m (7'3" x 5'9")

Modern Family Bathroom to Rear

Tenure

We are advised by the vendor that the property is freehold. We would advise all interested parties to obtain verification through their own solicitor or legal representative.

EPC supplied by vendor.

Current council tax band – C



316 Stratford Road
 Shirley
 Solihull
 B90 3DN

www.smart-homes.co.uk
 0121 744 4144

Agents Note: Whilst every care has been taken to prepare these particulars, they are for guidance purposes only. We believe all information to be correct from the day of marketing however, we advise and recommend that your conveyancer and or surveyor verifies all information supplied. All measurements are approximate and are for general guidance purposes only and whilst every care has been taken to ensure their accuracy, they should not be relied upon and potential buyers are advised to recheck the measurements.