



smarthomes

Normanton Avenue

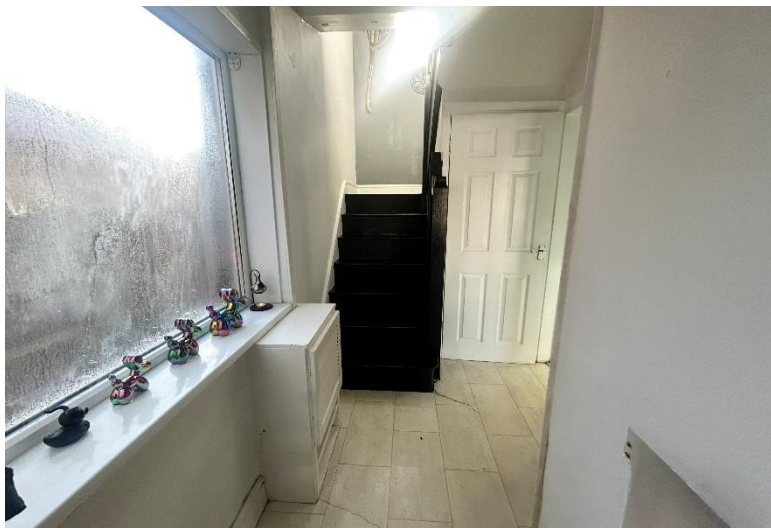
Sheldon, Birmingham

- A Two Double Bedroom Semi-Detached Family Home
- Re-Fitted Kitchen & Conservatory
- South Facing Rear Garden
- Situated in a Cul-De-Sac Location

£215,000

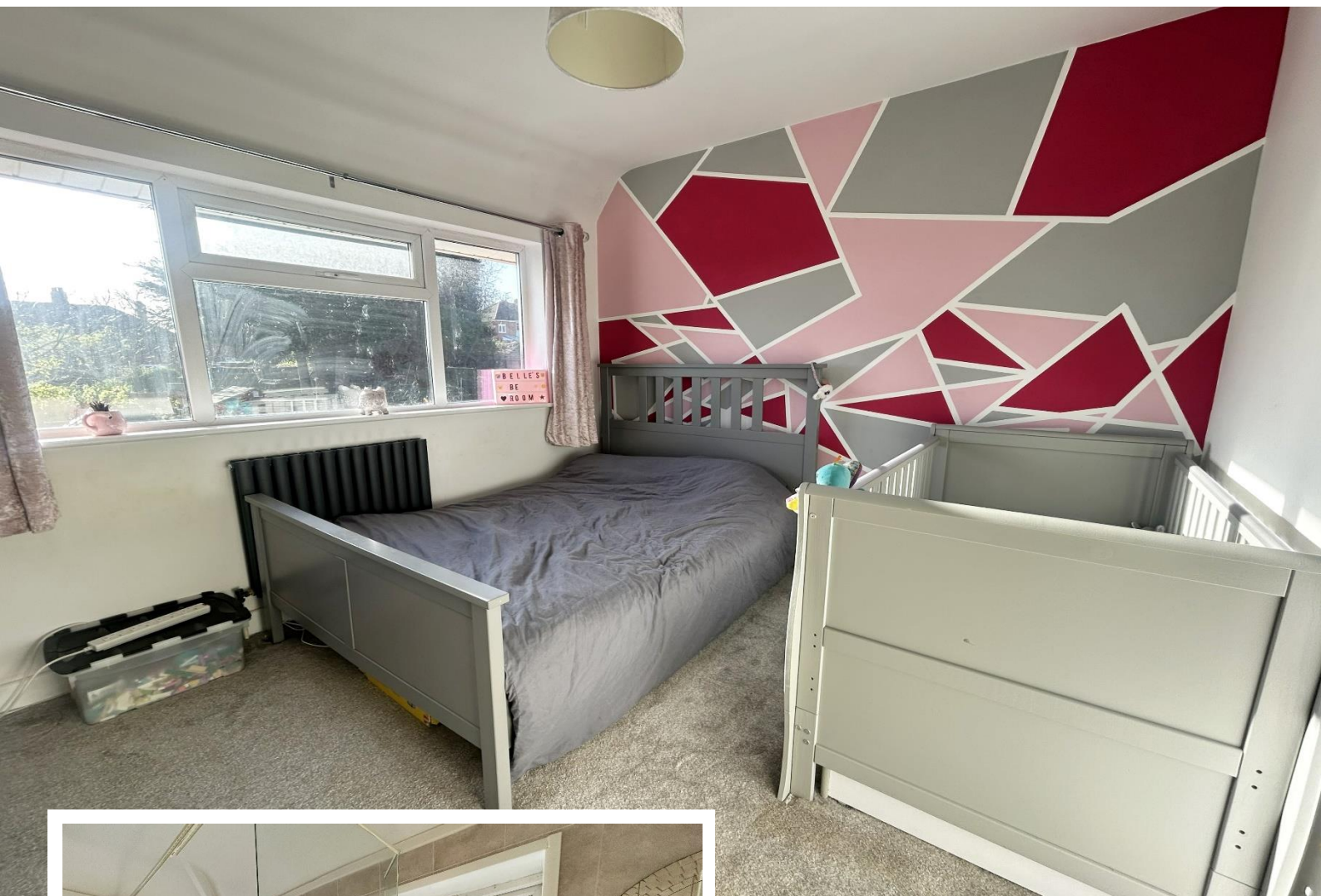
Current EPC Rating - D
Current Council Tax Band - B





Property Description

A semi-detached property situated in a cul-de-sac location offering accommodation comprising a re-fitted kitchen, conservatory, lounge, two double bedrooms, family bathroom and a South facing rear garden



Rooms & Measurements

Lounge to Front 3.84m x 3.35m (12'7" x 11'0")

Re-Fitted Kitchen to Rear 3.2m x 2.41m (10'6" x 7'11")

Conservatory 5.28m x 1.8m (17'4" x 5'11")

Bedroom One to Front 3.68m x 2.95m (12'1" x 9'8")

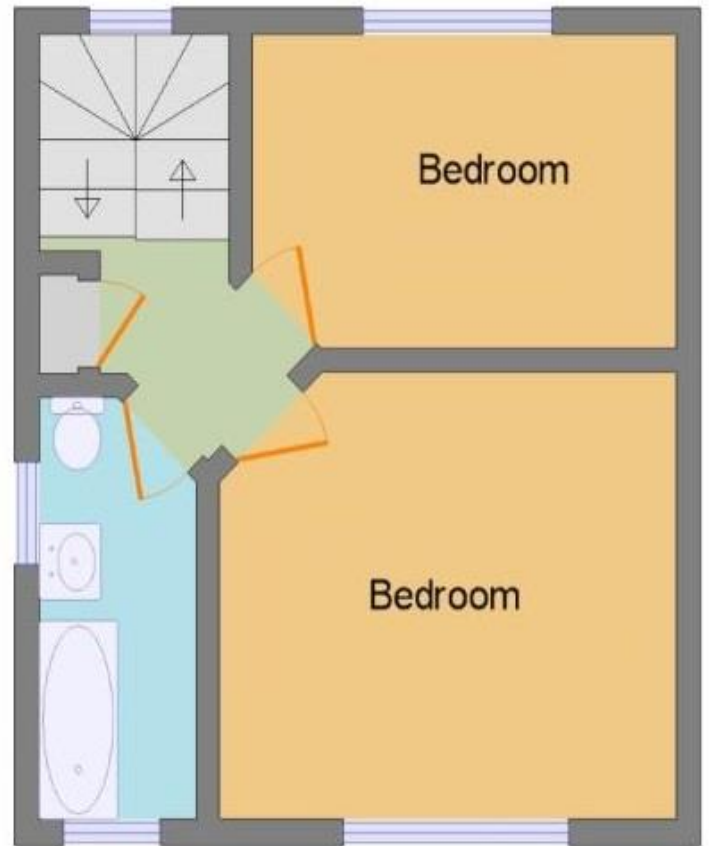
Bedroom Two to Rear 3.3m x 2.9m (10'10" x 9'6")

Family Bathroom

Tenure

We are advised by the vendor that the property is freehold. We would advise all interested parties to obtain verification through their own solicitor or legal representative. EPC supplied by vendor.

Current council tax band – B



316 Stratford Road
Shirley
Solihull
B90 3DN

www.smart-homes.co.uk
0121 744 4144

Agents Note: Whilst every care has been taken to prepare these particulars, they are for guidance purposes only. We believe all information to be correct from the day of marketing however, we advise and recommend that your conveyancer and or surveyor verifies all information supplied. All measurements are approximate are for general guidance purposes only and whilst every care has been taken to ensure their accuracy, they should not be relied upon and potential buyers are advised to recheck the measurements.