



smarthomes

Riley Road

Yardley Wood, Birmingham

- A Three Bedroom Mid-Terrace Family Home
- Fitted Kitchen & Re-Fitted Family Shower Room
- South/Westerly Facing Rear Garden with Large Rear Garage
- No Upward Chain

OIRO £210,000

Current EPC Rating - D
Current Council Tax Band - B





Property Description

A mid-terrace family home benefiting from no upward chain and offering accommodation comprising a spacious lounge, fitted kitchen, three bedrooms, re-fitted shower room, South/Westerly facing rear garden, large rear garage and driveway parking



Rooms & Measurements

Spacious Lounge to Front 4.95m x 3.86m (16'3" x 12'8")

Fitted Kitchen to Rear 3.86m x 2.74m (12'8" x 9'0")

Bedroom One to Front 4.14m x 2.97m (13'7" x 9'9")

Bedroom Two to Rear 3.81m x 2.97m (12'6" x 9'9")

Bedroom Three to Front 2.57m x 1.75m (8'5" x 5'9")

Re-Fitted Family Shower Room to Rear 1.73m x 1.73m (5'8" x 5'8")

Tenure

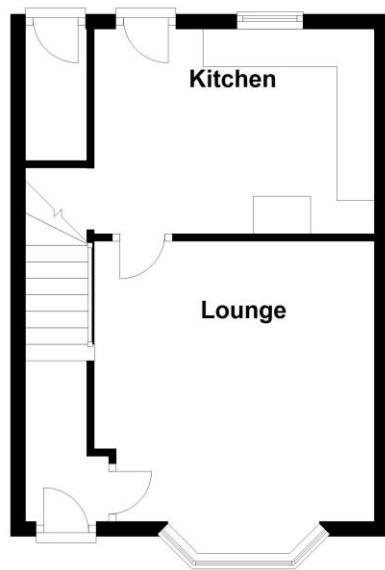
We are advised by the vendor that the property is freehold. We would advise all interested parties to obtain verification through their own solicitor or legal representative.

EPC supplied by Nigel Hodges.

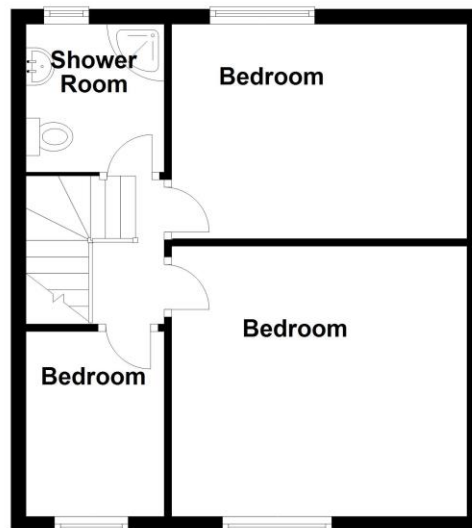
Current council tax band – B



Ground Floor



First Floor



Total area: approx. 69.4 sq. metres (747.2 sq. feet)

316 Stratford Road
Shirley
Solihull
B90 3DN

www.smart-homes.co.uk
0121 744 4144

Agents Note: Whilst every care has been taken to prepare these particulars, they are for guidance purposes only. We believe all information to be correct from the day of marketing however, we advise and recommend that your conveyancer and or surveyor verifies all information supplied. All measurements are approximate and for general guidance purposes only and whilst every care has been taken to ensure their accuracy, they should not be relied upon and potential buyers are advised to recheck the measurements.