



smarthomes
PORTFOLIO COLLECTION

Bespoke, targeted and innovative marketing for your property

Green Gate Barns, Earlswood, Solihull

From £625,000

🛏 3 🚿 1 🚻 1



A STUNNING detached 3 bedroomed bungalow set in a small private gated development of 3 beautiful new homes. Situated off Salter Street in Earlswood. The Bungalow is set back and enjoys uninterrupted views of the countryside. Underfloor heating, an air source heat pump, solar panels with battery storage combine to deliver a low carbon footprint as well as reduced running costs.

0121 824 5133

portfolio@smart-homes.co.uk

316 Stratford Road, Shirley, Solihull B90 3DN

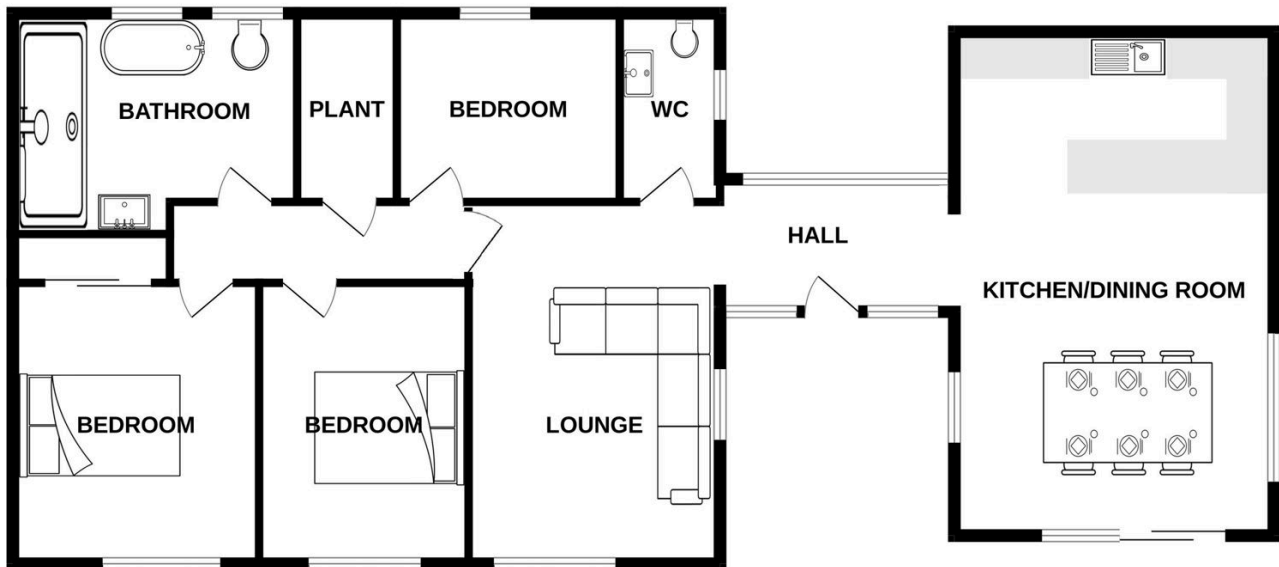
portfolio-collection.smart-homes.co.uk

Registered Company in England and Wales. Company No 03591917 Registered Office: JHS Ltd, 316 Stratford Road, Shirley, Solihull B90 3DN



Key Features

- High Standard of Build Quality and Specification
- Reception Hall with Full Height Glazed Window
- Stunning Bathroom with Separate Large Shower Unit
- Gated Private Development
- Solar Panels and Air Source Heat Pump
- Superb Fully Equipped Breakfast Kitchen/ Diner
- Three Bedrooms
- Underfloor Heating and Double Glazing Throughout
- Lounge with Glazed Inner Dividing Wall off the Hallway
- Large Garden, Patio and Drive



Whilst every attempt has been made to ensure the accuracy of the floorplan contained here, measurements of doors, windows, rooms and any other items are approximate and no responsibility is taken for any error, omission or mis-statement. This plan is for illustrative purposes only and should be used as such by any prospective purchaser. The services, systems and appliances shown have not been tested and no guarantee as to their operability or efficiency can be given.
Made with Metropix ©2024