



smarthomes
PORTFOLIO COLLECTION

Bespoke, targeted and innovative marketing for your property

Green Gate Barns, Earlswood, Solihull

£1,500,000

5 3 1



This detached luxury barn comprises of five bedrooms, three bathrooms, an open plan kitchen/diner, veranda, family room, Full corner opening sliding doors onto private garden, double sided built in log burner, bespoke floating style stairs with vaulted hallway and automatic roof windows, Balcony, master suite and walk in wardrobe off the master bedroom, Crittall Glass doorway from vaulted hallway and underfloor heating to solid floors upstairs and downstairs with separate zone controls.

0121 824 5133

portfolio@smart-homes.co.uk

316 Stratford Road, Shirley, Solihull B90 3DN

portfolio-collection.smart-homes.co.uk

Registered Company in England and Wales. Company No 03591917 Registered Office: JHS Ltd, 316 Stratford Road, Shirley, Solihull B90 3DN

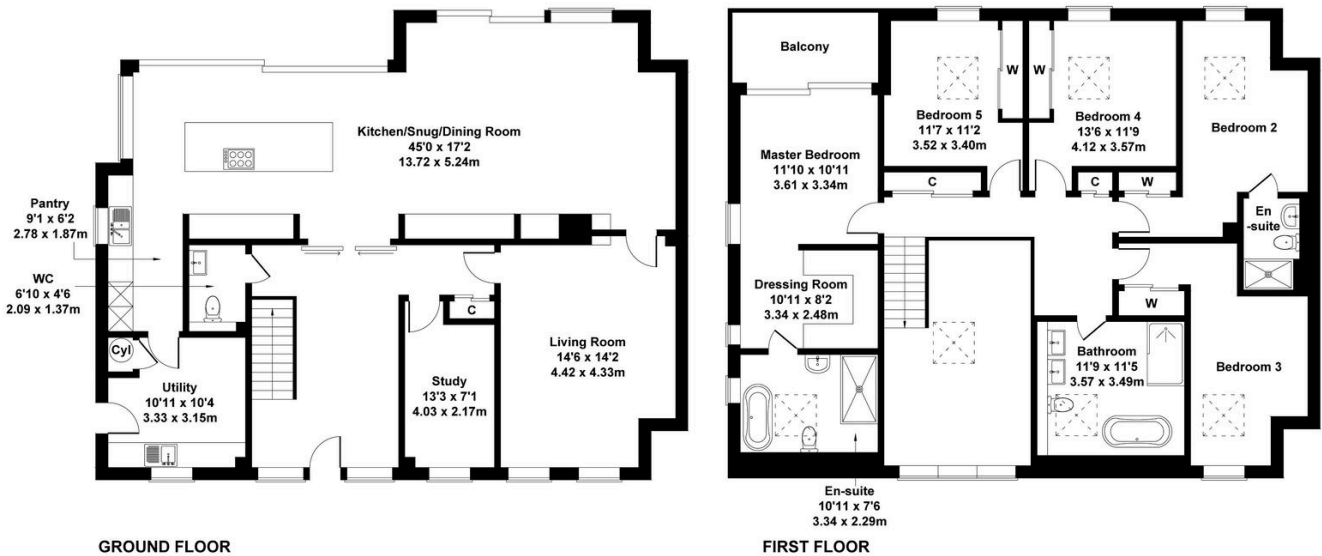


Key Features

- Contemporary and thoughtfully designed
- Large Family Home with Five Bedrooms
- Balcony off the master bedroom overlooking the views
- Gated and secure Private Development
- Solar Panels and Air Source Heat Pump
- Quality finish and specification throughout
- Spectacular views to the rear of rolling countryside
- Underfloor Heating and Double Glazing Throughout
- Ample parking
- Large Garden with extensive patio area

Green Gate Barns

Approximate Gross Internal Area
2960 sq ft - 275 sq m



Not to Scale. Produced by The Plan Portal 2024
For Illustrative Purposes Only.