



smarthomes

## Acheson Road

Hall Green, Birmingham

- A Very Well Presented Four Bedroom Family Home
- Kitchen/Diner, Through Lounge & Dining Room
- West Facing Rear Garden & Driveway Parking
- En-Suite Shower Room & Four Piece Family Bathroom

**£425,000**

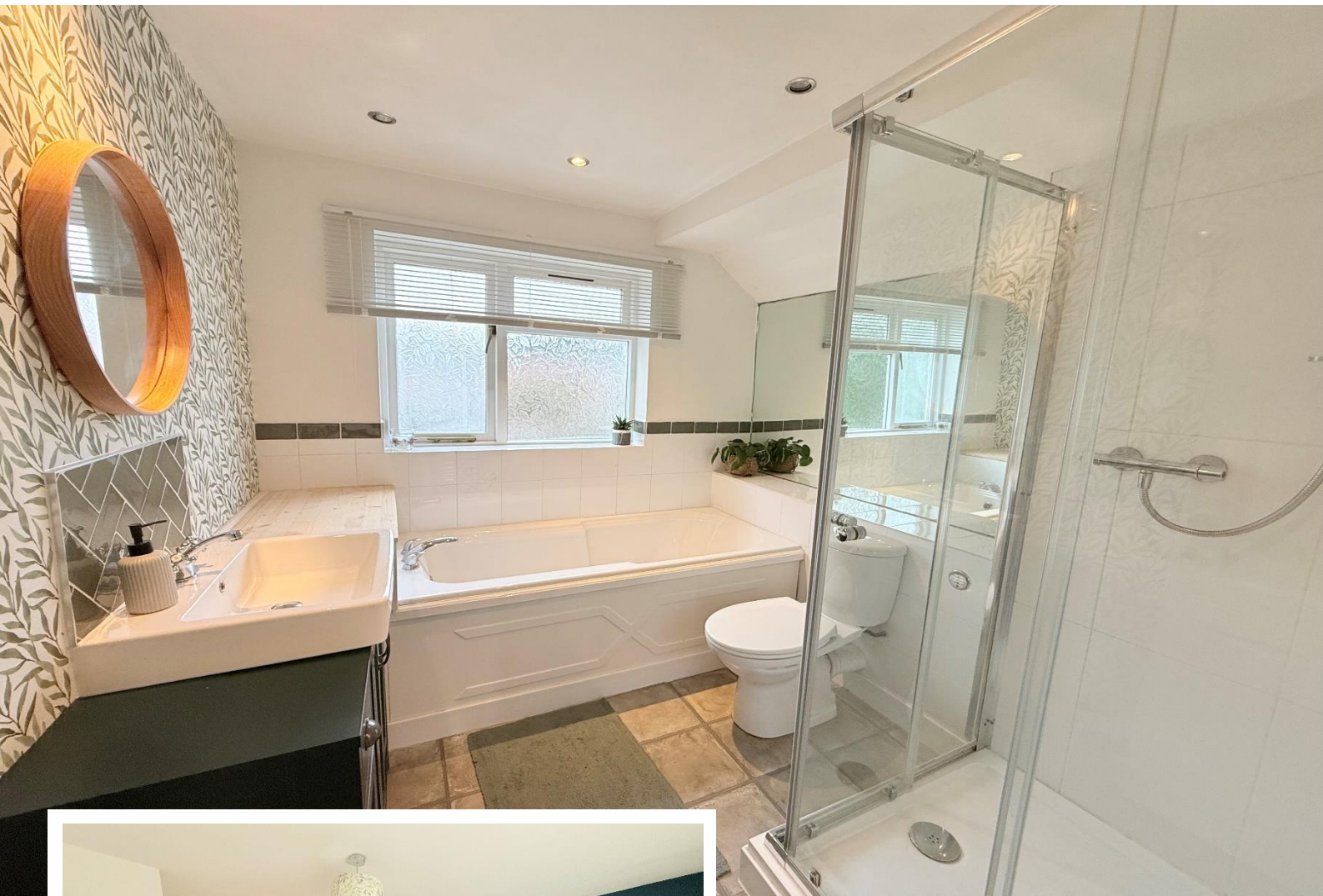
Current EPC Rating - C  
Current Council Tax Band - D





## Property Description

A spacious & extended semi-detached family home situated on a generous corner plot. Offering accommodation comprising a spacious through lounge, dining room, breakfast kitchen, master bedroom with dressing area and en-suite shower room, three further bedrooms, four piece family bathroom, West facing rear garden and driveway parking



## Rooms & Measurements

Spacious Through Lounge 7.24m x 3.96m max (23'9" x 13'0" max)

Dining Room to Front 3.89m x 2.82m (12'9" x 9'3")

Breakfast Kitchen to Rear 5.36m x 2.82m (17'7" x 9'3")

Bedroom One to Front 3.89m x 3.84m max (12'9" x 12'7" max)

Dressing Area 1.09m x 1.02m (3'7" x 3'4")

En-Suite Shower Room to Rear 3.2m x 1.14m (10'6" x 3'9")

Bedroom Two to Rear 4.19m x 2.87m (13'9" x 9'5")

Bedroom Three to Front 4.11m x 2.84m (13'6" x 9'4")

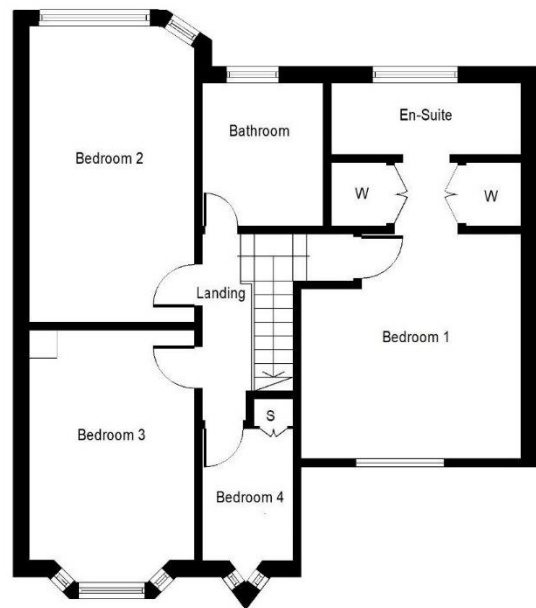
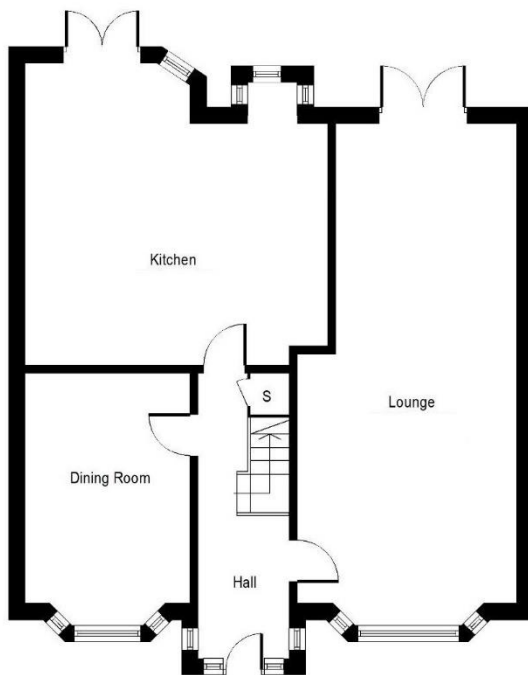
Bedroom Four to Front 2.21m x 1.6m (7'3" x 5'3")

Four Piece Family Bathroom to Rear 2.46m x 1.98m (8'1" x 6'6")

### Tenure

We are advised by the vendor that the property is freehold. We would advise all interested parties to obtain verification through their own solicitor or legal representative.

EPC supplied by vendor. Current council tax band – D



316 Stratford Road  
 Shirley  
 Solihull  
 B90 3DN

[www.smart-homes.co.uk](http://www.smart-homes.co.uk)  
 0121 744 4144

Agents Note: Whilst every care has been taken to prepare these particulars, they are for guidance purposes only. We believe all information to be correct from the day of marketing however, we advise and recommend that your conveyancer and or surveyor verifies all information supplied. All measurements are approximate are for general guidance purposes only and whilst every care has been taken to ensure their accuracy, they should not be relied upon and potential buyers are advised to recheck the measurements.