
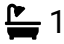



Colebrook Place, Leyman Close

£350,000

 3  1  1



LAST PLOT REMAINING!!

A beautifully designed three bedroom new build home at Damson Court, Leyman Close, Yardley Wood, within an exclusive development of just 14 properties. Offering modern living, two allocated parking spaces, and a quiet residential setting close to local amenities and transport links. Predicted completion Spring 2026. Get in touch today to find out more on 0121 744 4144 option3

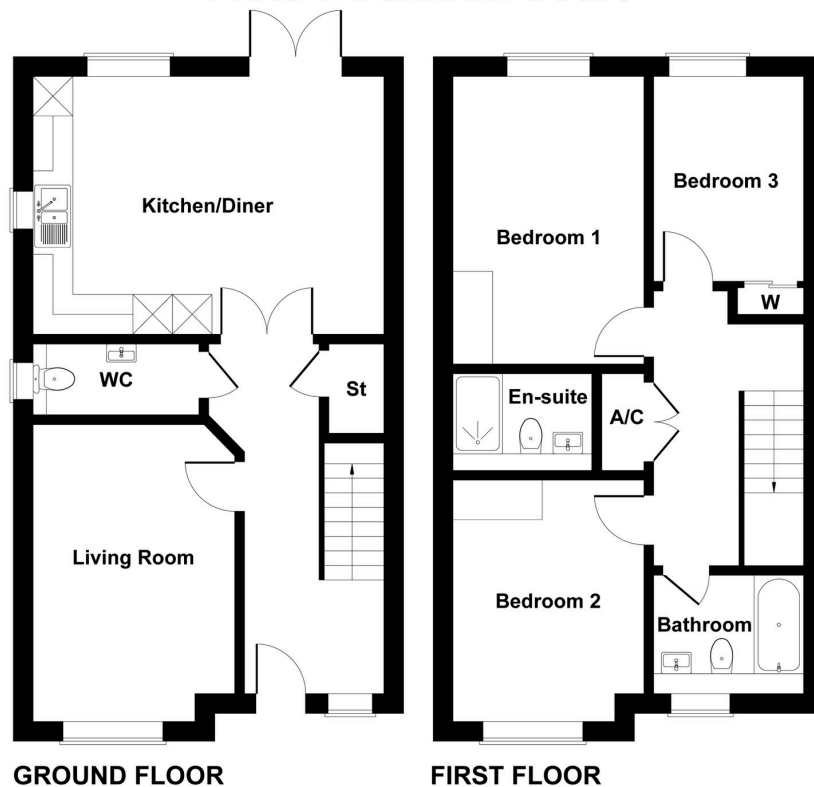
3 Union Road, Shirley, Solihull B90 3BT

sales • new homes • land • commercial • mortgages • auction

Key Features

- Fully integrated Neff kitchen appliances
- 10 Yr Build Warranty
- Great transport links nearby
- Fitted wardrobes and bedroom furniture
- Security systems set in place
- 2 Allocated parking spaces
- Ample storage space
- EV charging point
- Development of 14 beautiful homes
- Estimated completion date - Spring 2026

Plots 7 Damson Court



GROUND FLOOR

FIRST FLOOR

Not to Scale. Produced by The Plan Portal 2026
For Illustrative Purposes Only.