



smarthomes

Bromford Mere

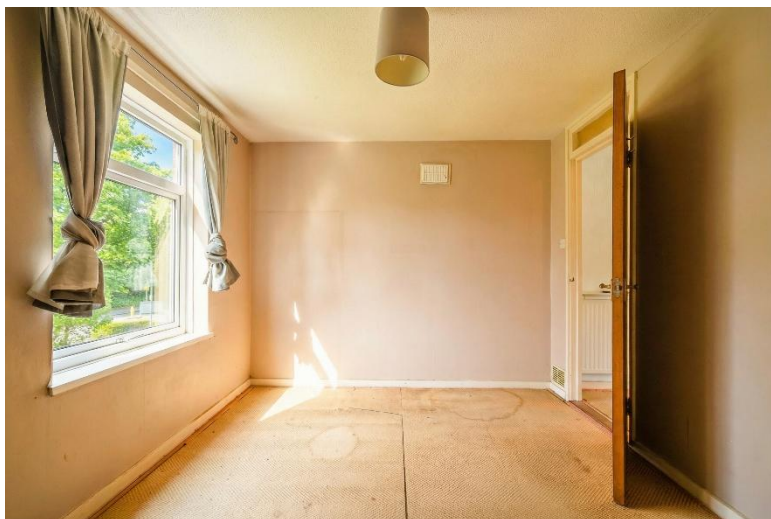
Warwick Road, Olton, Solihull

- A Spacious Second Floor Apartment with No Upward Chain
- One Double Bedroom
- Lovely Location Next To Olton Mere
- Fitted Kitchen & Bathroom with White Suite

£120,000

Current EPC Rating - C
Current Council Tax Band - B





Property Description

A one bedroom second floor apartment requiring some modernisation and situated in a lovely location next to Olton Mere and benefiting from no upward chain. Offering accommodation comprising refurbished lounge, kitchen, shower room, double bedroom, gas central heating and double glazing

Solihull is situated in the heart of England and is considered to be one of the most highly sought after residential areas in the country boasting a range of local amenities including excellent schools, colleges, parks, restaurants, bars and an excellent variety of shopping centres including Touchwood shopping centre and the new Resorts World. Solihull has convenient road networks linking the M42, M6, M40, M1 and M5 giving easy access to the NEC Arena, Birmingham International Airport and Railway Station.



Rooms & Measurements

Dual Aspect Lounge 3.78m x 3.89m (12'5" x 12'9")

Fitted Kitchen 2.01m x 2.67m (6'7" x 8'9")

Double Bedroom to Front 2.9m x 3.91m (9'6" x 12'10")

Bathroom

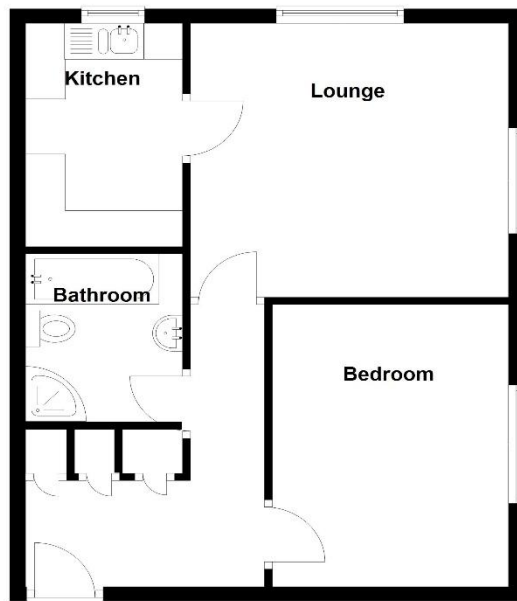
Tenure

We are advised by the vendor that the property is leasehold with approx. 980 years remaining on the lease and a service charge of approx. £2,040 per annum. We would advise all interested parties to obtain verification through their own solicitor or legal representative. EPC supplied by Vendor. Current council tax band – B



First Floor

Approx. 47.6 sq. metres (512.0 sq. feet)



Total area: approx. 47.6 sq. metres (512.0 sq. feet)

316 Stratford Road
Shirley
Solihull
B90 3DN

www.smart-homes.co.uk
0121 744 4144

Agents Note: Whilst every care has been taken to prepare these particulars, they are for guidance purposes only. We believe all information to be correct from the day of marketing however, we advise and recommend that your conveyancer and or surveyor verifies all information supplied. All measurements are approximate are for general guidance purposes only and whilst every care has been taken to ensure their accuracy, they should not be relied upon and potential buyers are advised to recheck the measurements.