



smarthomes

Primrose Croft

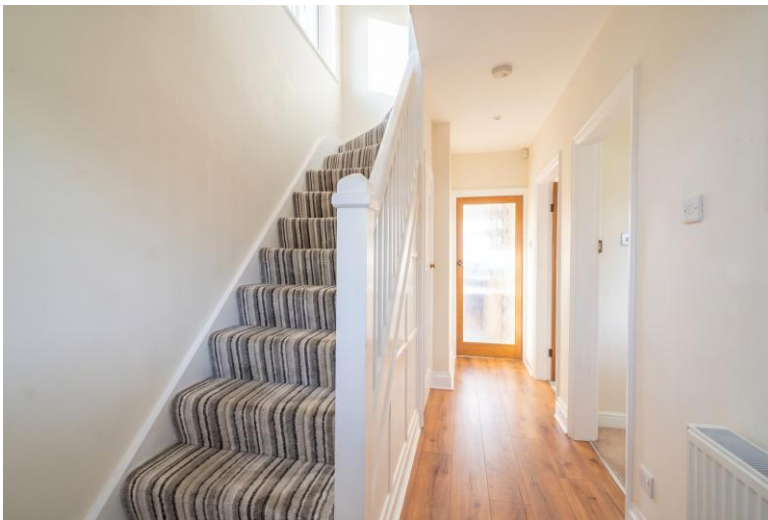
Hall Green, Birmingham

- An Extended Three Double Bedroom Semi-Detached Property
- Spacious Lounge & Dining Room
- Extended Fitted Kitchen
- Modern En-Suite Shower Room & Family Bathroom

Offers Over £350,000

Current EPC Rating - TBC
Current Council Tax Band - C





Property Description

A very well presented and extended semi-detached family home situated in a cul-de-sac location. Offering accommodation comprising two spacious reception rooms, extended fitted kitchen, three double bedrooms, modern family bathroom, en-suite shower room, extensive rear garden, gardeners W.C, side garage and driveway parking

Tenure

We are advised by the vendor that the property is freehold. We would advise all interested parties to obtain verification through their own solicitor or legal representative

EPC supplied by Nigel Hodges

Current council tax band – C



Rooms & Measurements

Dining Room to Front 4m x 3.6m (13'1" x 11'9")

Lounge to Rear 4.6m x 3.6m (15'1" x 11'9")

Extended Fitted Kitchen to Rear 5.2m x 2.4m (17'0" x 7'10")

Covered Side Passage 4.7m x 1.9m (15'5" x 6'2")

Gardeners W.C

Bedroom One to Rear 4.4m max x 2.4m (14'5" max x 7'10")

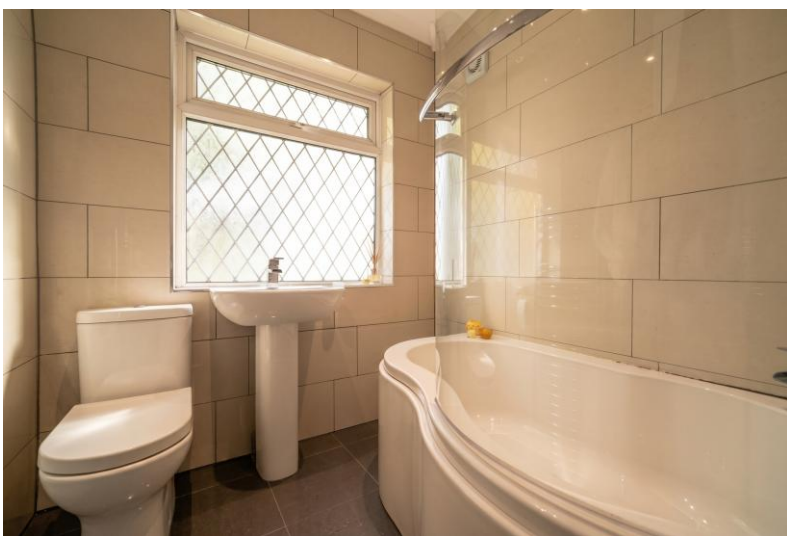
En-Suite Shower Room

Bedroom Two to Rear 4.6m x 3.6m (15'1" x 11'9")

Bedroom Three to Front 4m x 3.6m (13'1" x 11'9")

Modern Family Bathroom to Front 2.2m x 1.9m (7'2" x 6'2")

Side Garage 4.9m x 2.4m (16'0" x 7'10")



316 Stratford Road
Shirley
Solihull
B90 3DN

www.smart-homes.co.uk
0121 744 4144

Agents Note: Whilst every care has been taken to prepare these particulars, they are for guidance purposes only. We believe all information to be correct from the day of marketing however, we advise and recommend that your conveyancer and or surveyor verifies all information supplied. All measurements are approximate are for general guidance purposes only and whilst every care has been taken to ensure their accuracy, they should not be relied upon and potential buyers are advised to recheck the measurements.