



smarthomes

Foredrove Lane

Solihull

- A Well Presented Two Bedroom Ground Floor Apartment
- Lounge Diner
- Modern Fitted Kitchen
- Communal Outside Storage Facility

£160,000

Current EPC Rating 65 (D)
Current Council Tax Band B

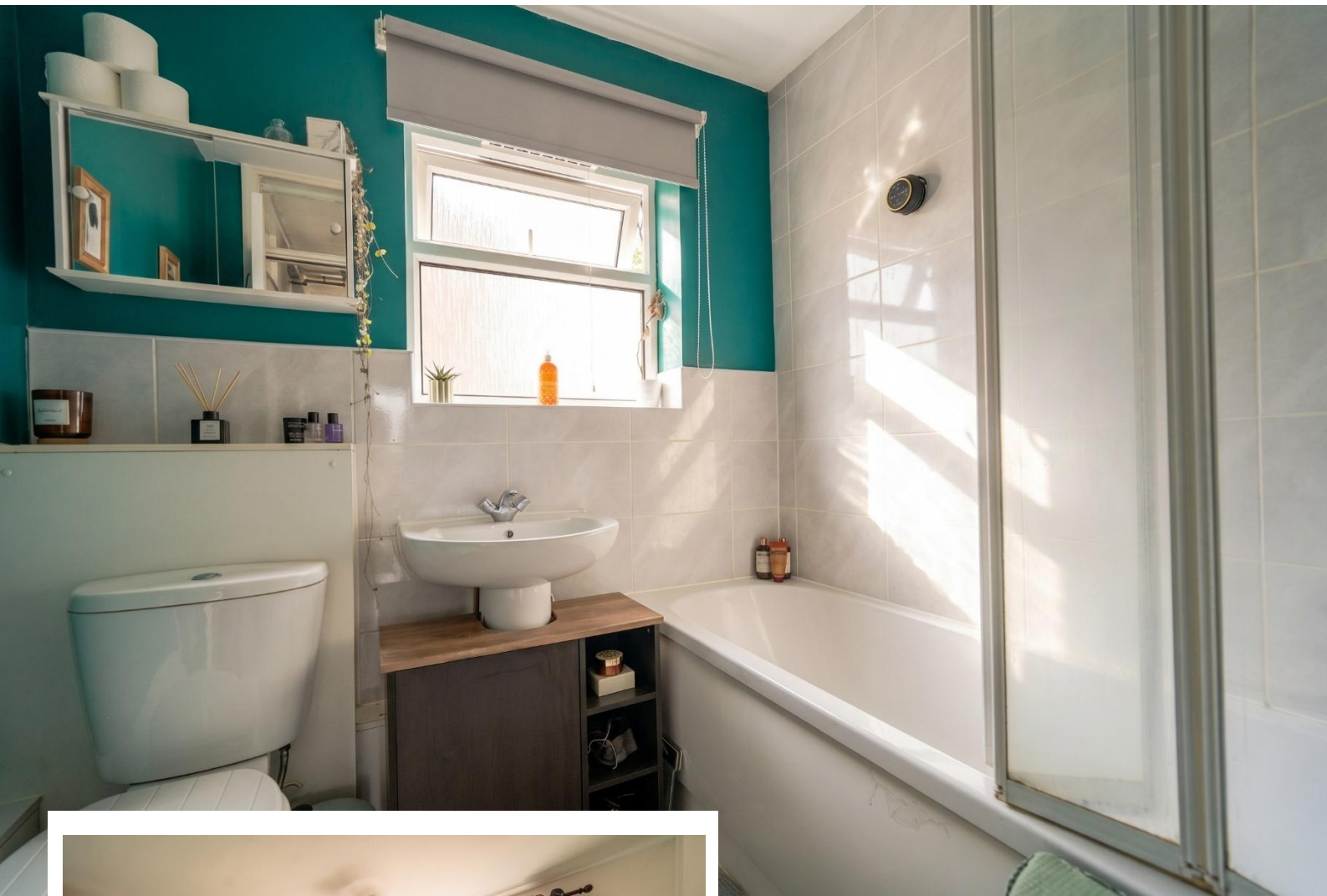




Property Description

A well presented two bedroom ground floor apartment conveniently situated for local amenities with accommodation briefly comprising secure communal entrance hall, lounge diner, modern fitted kitchen, family bathroom, on-road parking, UPVC double glazing, gas central heating and outside storage facility

Solihull is situated in the heart of England and is considered to be one of the most highly sought after residential areas in the country boasting a range of local amenities including excellent schools, colleges, parks, restaurants, bars and an excellent variety of shopping centres including Touchwood shopping centre and the new Resorts World. Solihull has convenient road networks linking the M42, M6, M40, M1 and M5 giving easy access to the NEC Arena, Birmingham International Airport and Railway Station.



Rooms & Measurements

Entrance Hall

Lounge Diner to Front - 4.1m x 4m (13'5" x 13'1")

Modern Fitted Kitchen to Side - 3.6m x 1.9m (11'9" x 6'2")

Bedroom One to Rear - 4.1m x 2.9m (13'5" x 9'6")

Bedroom Two to Front - 3m x 2.1m (9'10" x 6'10")

Family Bathroom - 2m x 1.9m (6'6" x 6'2")

Tenure

We are advised by the vendor that the property is leasehold with approx. 117 years remaining on the lease, a service charge of approx. £800 per annum and a ground rent of approx. £10 per annum. We would advise all interested parties to obtain verification through their own solicitor or legal representative

EPC supplied by Vendor

Current council tax band – B



316 Stratford Road
Shirley
Solihull
B90 3DN

www.smart-homes.co.uk
0121 744 4144

Agents Note: Whilst every care has been taken to prepare these particulars, they are for guidance purposes only. We believe all information to be correct from the day of marketing however, we advise and recommend that your conveyancer and or surveyor verifies all information supplied. All measurements are approximate and are for general guidance purposes only and whilst every care has been taken to ensure their accuracy, they should not be relied upon and potential buyers are advised to recheck the measurements.