



smarthomes

Green Court, Fox Hollies Road

Hall Green, Birmingham

- A Well Maintained Mid-Terrace Property
- Two Double Bedrooms
- Spacious Lounge/Diner & Modern Kitchen
- Delightful Private Rear Garden

£220,000

Current EPC Rating - TBC
Current Council Tax Band - C

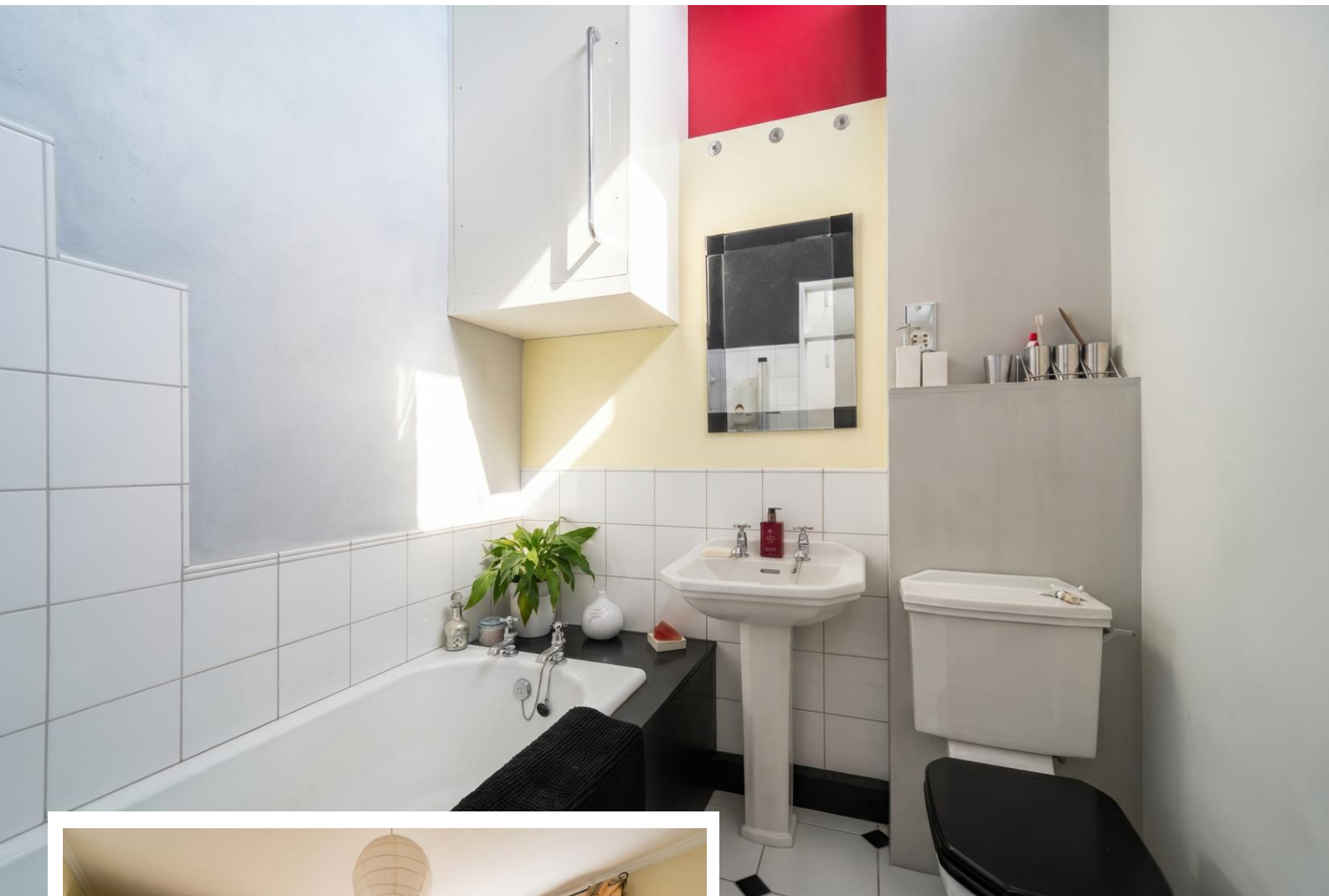




Property Description

A very well maintained mid-terrace property situated in a discreet cul-de-sac location close to many local amenities. Offering accommodation comprising a spacious lounge/diner, fitted kitchen, two double bedrooms, bathroom, delightful private rear garden and direct access to a rear garage and communal parking





Rooms & Measurements

Spacious Lounge/Diner to Rear 4.88m x 4.06m (16'0" x 13'4")

Modern Fitted Kitchen to Front 3.43m x 2.21m (11'3" x 7'3")

Bedroom One to Rear 4.06m x 3.02m (13'4" x 9'11")

Bedroom Two to Front 3.05m x 3.05m (10'0" x 10'0")

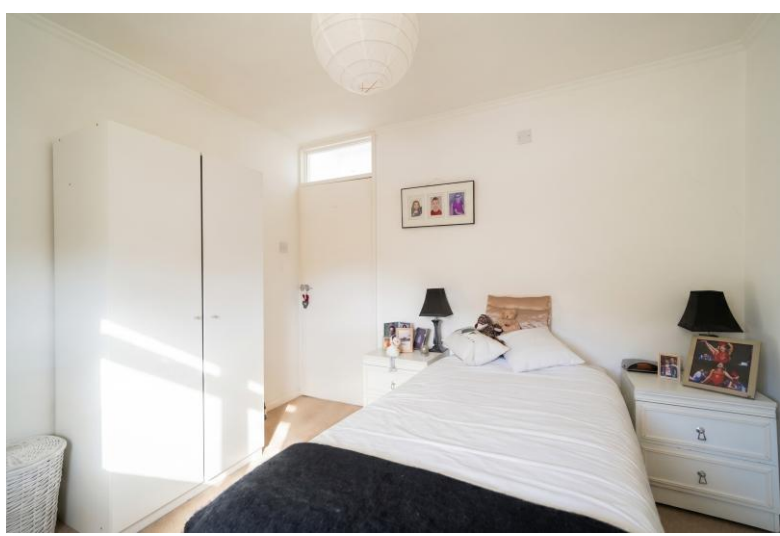
Family Bathroom

Delightful Private Rear Garden

Rear Garage & Communal Parking

Tenure

We are advised by the vendor that the property is freehold with a service charge of £1,200 per annum for the maintenance of communal areas and maintenance of the external of the building including the roof. We would advise all interested parties to obtain verification through their own solicitor or legal representative. EPC supplied by Nigel Hodges. Current council tax band – C



316 Stratford Road
Shirley
Solihull
B90 3DN

www.smart-homes.co.uk
0121 744 4144

Agents Note: Whilst every care has been taken to prepare these particulars, they are for guidance purposes only. We believe all information to be correct from the day of marketing however, we advise and recommend that your conveyancer and or surveyor verifies all information supplied. All measurements are approximate are for general guidance purposes only and whilst every care has been taken to ensure their accuracy, they should not be relied upon and potential buyers are advised to recheck the measurements.