



smarthomes

Ilsley Drive

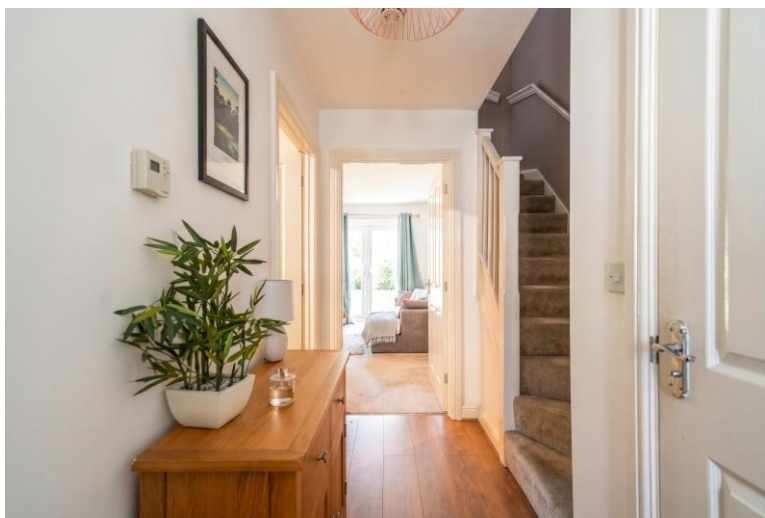
Acocks Green, Birmingham

- A Well-Presented Semi-Detached Property
- Two Good Size Bedrooms
- Good Sized Lounge/Diner
- Jack & Jill Bathroom & South Facing Garden

£240,000

Current EPC Rating - C
Current Council Tax Band - C



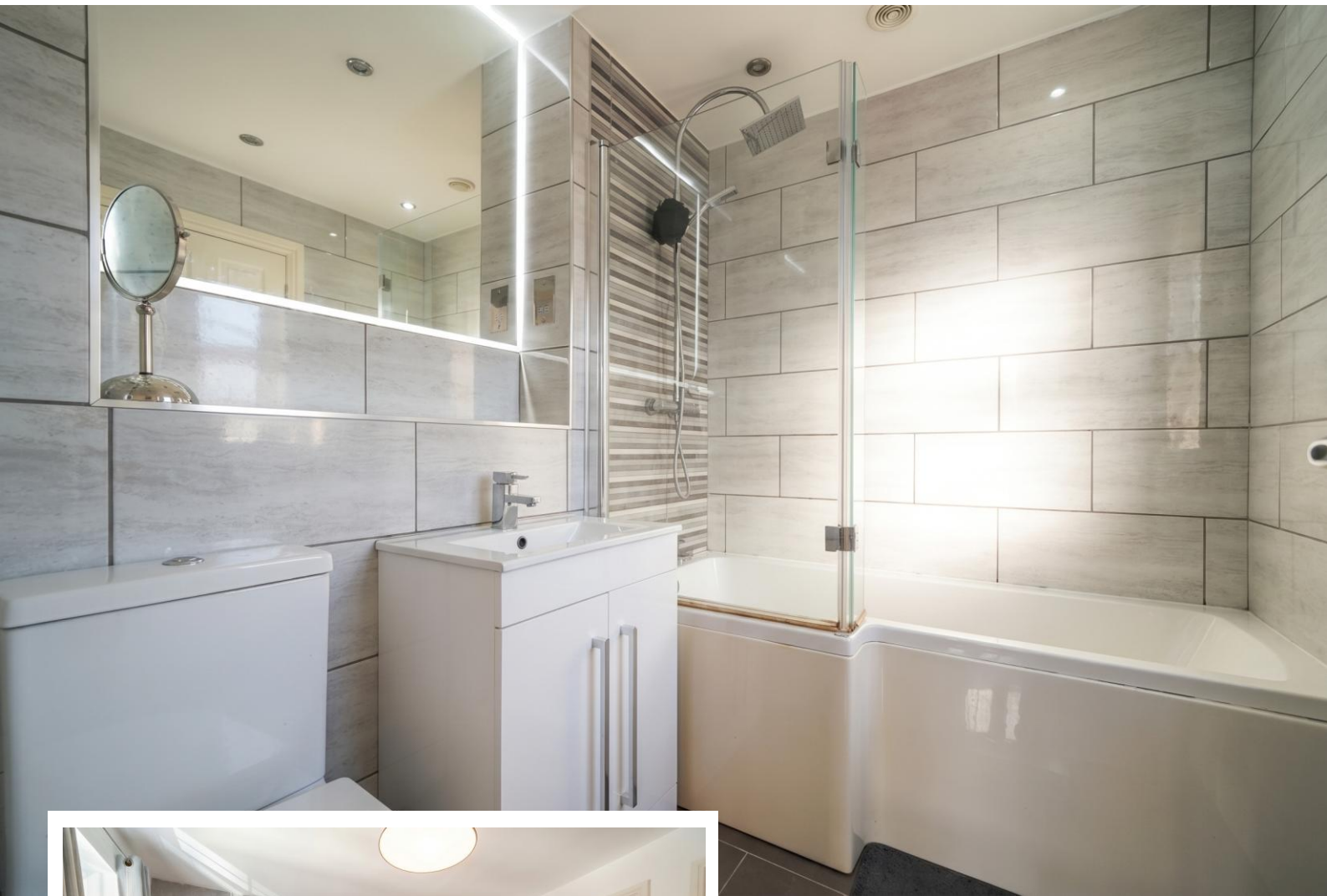


Property Description

A well presented semi-detached property situated in a discreet cul-de-sac location and benefiting from no upward chain. Offering accommodation comprising a spacious lounge/diner, fitted kitchen, guest W.C, two good size bedrooms, Jack & Jill bathroom, private South facing rear garden and driveway parking

Tenure

We are advised by the vendor that the property is freehold. We would advise all interested parties to obtain verification through their own solicitor or legal representative. EPC supplied by vendor. Current council tax band – C



Rooms & Measurements

Guest W.C

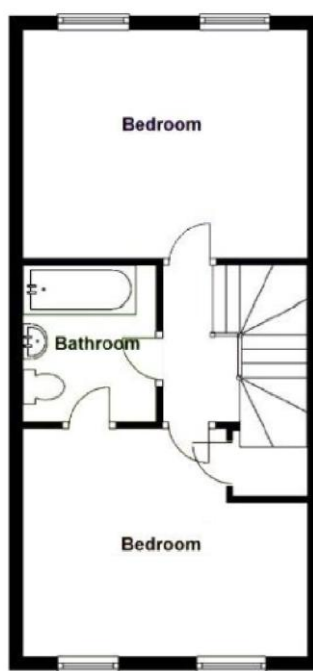
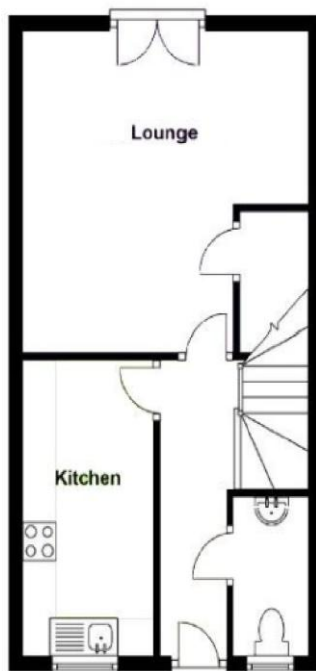
Fitted Kitchen to Front 3.7m x 1.8m (12'1" x 5'10")

Spacious Lounge/Diner to Rear 4m x 4m (13'1" x 13'1")

Bedroom One to Front 4m x 3.2m (13'1" x 10'5")

Bedroom Two to Rear 3.5m x 2.2m (11'5" x 7'2")

Jack & Jill Bathroom 2.2m x 1.7m (7'2" x 5'6")



316 Stratford Road
Shirley
Solihull
B90 3DN

www.smart-homes.co.uk
0121 744 4144

Agents Note: Whilst every care has been taken to prepare these particulars, they are for guidance purposes only. We believe all information to be correct from the day of marketing however, we advise and recommend that your conveyancer and or surveyor verifies all information supplied. All measurements are approximate and are for general guidance purposes only and whilst every care has been taken to ensure their accuracy, they should not be relied upon and potential buyers are advised to recheck the measurements.