



smarthomes

## Scribers Lane

Hall Green, Birmingham

- A Very Well Presented Two Double Bedroom Bungalow
- Modern Kitchen/Diner & Spacious Lounge
- Private South Facing Rear Garden
- Modern Wet Room & Utility

**£350,000**

Current EPC Rating - D  
Current Council Tax Band - D





## **Property Description**

A very well presented detached bungalow situated in a most convenient location and benefiting from no upward chain. Offering accommodation comprising a spacious lounge, modern kitchen/diner, utility room, two double bedrooms, modern wet room, garage, ample driveway parking and a private South facing rear garden



## Rooms & Measurements

Spacious Lounge to Rear 5m x 3.6m (16'4" x 11'9")

Modern Kitchen/Diner to Front 3.6m x 3.4m (11'9" x 11'1")

Utility Room 3m x 2.2m (9'10" x 7'2")

Bedroom One to Front 4.5m x 2.9m (14'9" x 9'6")

Bedroom Two to Rear 4.2m x 3m (13'9" x 9'10")

Spacious Wet Room to Side 2.9m x 2.4m (9'6" x 7'10")

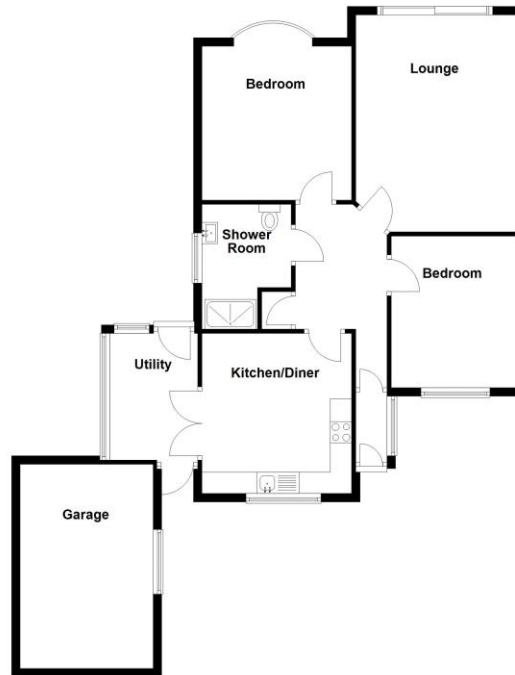
Side Garage 4.9m x 2.4m (16'0" x 7'10")

### Tenure

We are advised by the vendor that the property is freehold. We would advise all interested parties to obtain verification through their own solicitor or legal representative. EPC supplied by Nigel Hodges. Current council tax band – D



**Ground Floor**  
Approx. 94.1 sq. metres (1013.3 sq. feet)



Total area: approx. 94.1 sq. metres (1013.3 sq. feet)

316 Stratford Road  
Shirley  
Solihull  
B90 3DN

[www.smart-homes.co.uk](http://www.smart-homes.co.uk)  
0121 744 4144

Agents Note: Whilst every care has been taken to prepare these particulars, they are for guidance purposes only. We believe all information to be correct from the day of marketing however, we advise and recommend that your conveyancer and or surveyor verifies all information supplied. All measurements are approximate and are for general guidance purposes only and whilst every care has been taken to ensure their accuracy, they should not be relied upon and potential buyers are advised to recheck the measurements.