



smarthomes

Hilton Avenue

Hall Green, Birmingham

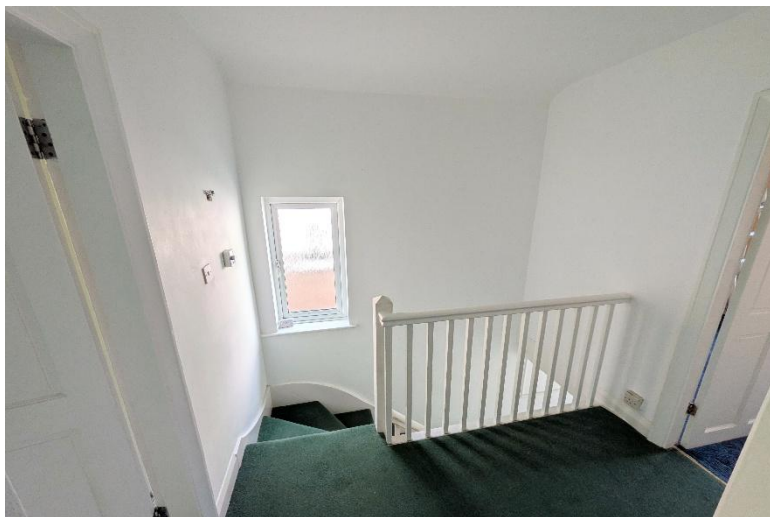
- A Semi-Detached Family Home
- Three Bedrooms
- Lounge
- Dining Room
- Fitted Kitchen
- Three Piece Family Bathroom
- Large Garage To Rear

Offers Over £300,000

Current EPC Rating - D

Current Council Tax Band - C





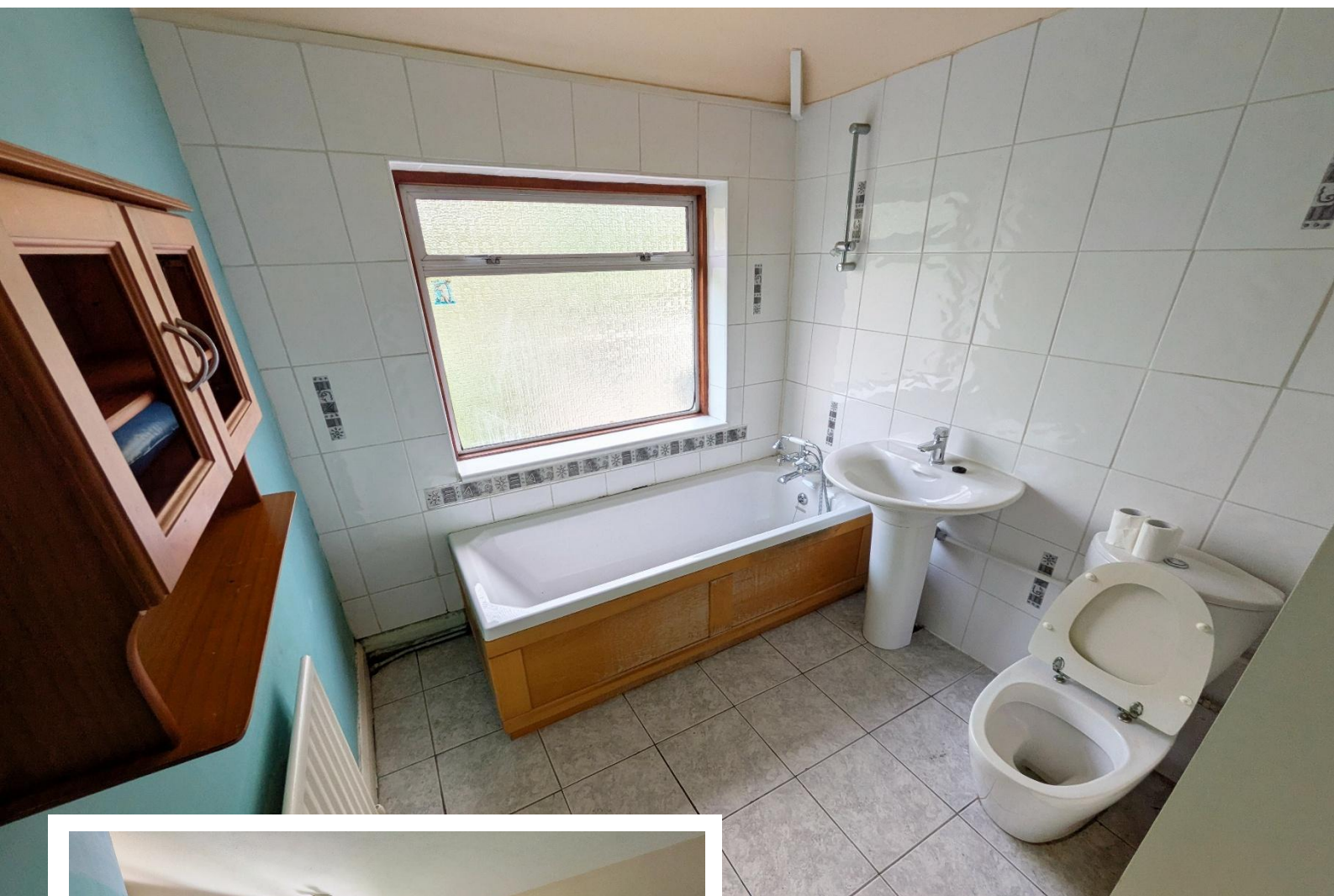
Property Description

A semi-detached family home situated in a popular cul-de-sac location requiring updating throughout. Offering accommodation comprising two reception rooms, fitted kitchen, three bedrooms, family bathroom, driveway parking, South/Westerly facing rear garden and a large rear garage

Tenure

We are advised by the vendor that the property is freehold. We would advise all interested parties to obtain verification through their own solicitor or legal representative

EPC supplied by Nigel Hodges
Current council tax band – C



Rooms & Measurements

Lounge to Front 4.78m x 3.51m (15'8" x 11'6")

Dining Room to Rear 3.66m x 3.2m (12'0" x 10'6")

Fitted Kitchen to Rear 2.44m x 2.13m (8'0" x 7'0")

Bedroom One to Front 4.93m x 3.23m (16'2" x 10'7")

Bedroom Two to Rear 3.66m x 3.2m (12'0" x 10'6")

Bedroom Three to Front 2.57m x 2.13m (8'5" x 7'0")

Family Bathroom to Rear 2.62m x 0m (8'7" x 0'0")

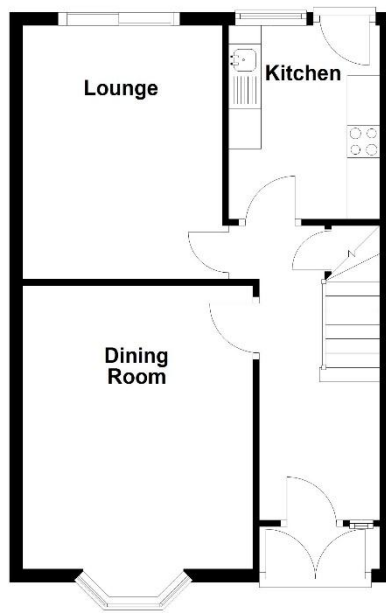
Large Rear Garage 4.9m x 4.09m (16'1" x 13'5")





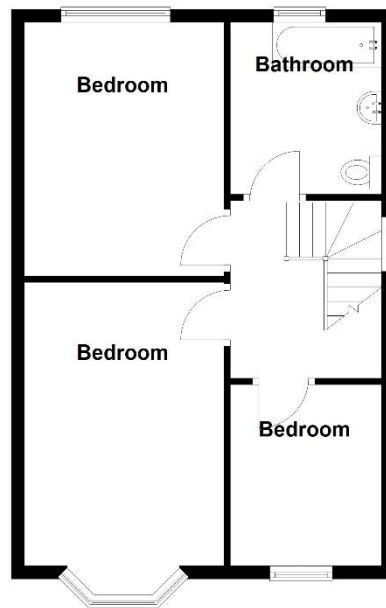
Ground Floor

Approx. 46.0 sq. metres (495.3 sq. feet)



First Floor

Approx. 46.1 sq. metres (495.8 sq. feet)



Total area: approx. 92.1 sq. metres (991.1 sq. feet)

316 Stratford Road
Shirley
Solihull
B90 3DN

www.smart-homes.co.uk
0121 744 4144

Agents Note: Whilst every care has been taken to prepare these particulars, they are for guidance purposes only. We believe all information to be correct from the day of marketing however, we advise and recommend that your conveyancer and or surveyor verifies all information supplied. All measurements are approximate are for general guidance purposes only and whilst every care has been taken to ensure their accuracy, they should not be relied upon and potential buyers are advised to recheck the measurements.