



smarthomes

## Maythorn Grove

Hillfield, Solihull

- An Extremely Well Presented Detached Family Home
- Three Bedrooms
- Lounge
- Kitchen Diner

**£500,000**

Current EPC Rating - 64 (D)

Current Council Tax Band - E

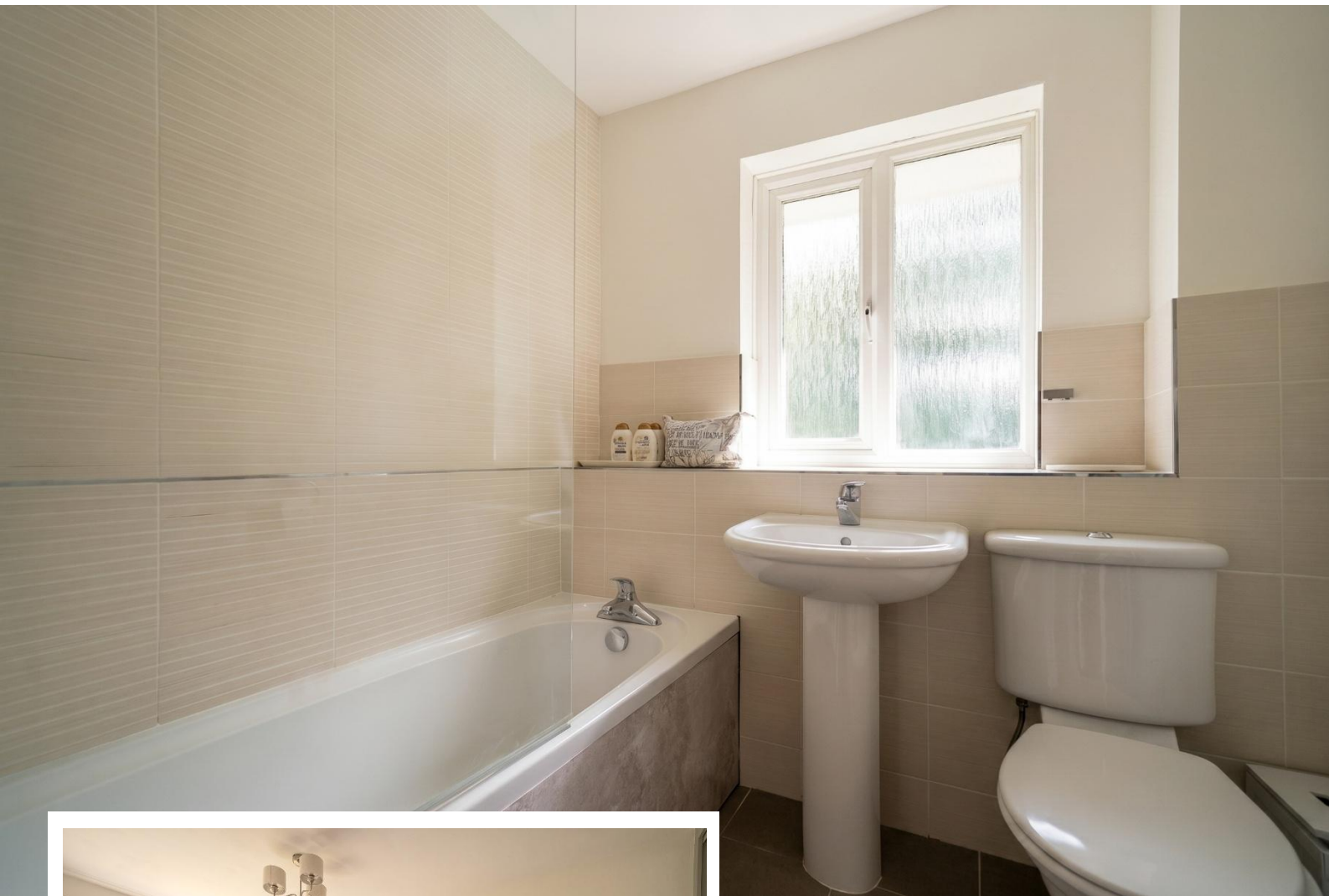




## Property Description

An extremely well presented three bedroom detached family home situated in a convenient location and offering lounge, kitchen diner, guest WC, family bathroom, private rear garden, garage, off-road parking, UPVC double glazing and gas central heating

Hillfield is a very sought after location near to Solihull Town Centre and within Tudor Grange Academy senior school catchment. There are local shops in Monkspath off Shelly Crescent, where there is a doctors, dentists and the popular Farm gastropub and restaurant. Solihull Town Centre offers an excellent choice of shopping facilities including Touchwood shopping centre, Waitrose and John Lewis department store.



## Rooms & Measurements

Entrance Hall

Guest WC

Lounge to Front - 4.2m x 3.8m (13'9" x 12'5")

Kitchen Diner to Rear - 4.8m x 3.1m (15'8" x 10'2")

Bedroom One to Front - 3.8m (to wardrobe) x 2.5m (12'5" x 8'2")

Bedroom Two to Rear - 3m x 2.8m (9'10" x 9'2")

Bedroom Three to Front - 2.9m x 2.2m (9'6" x 7'2")

Family Bathroom to Rear - 1.9m x 1.7m (6'2" x 5'6")

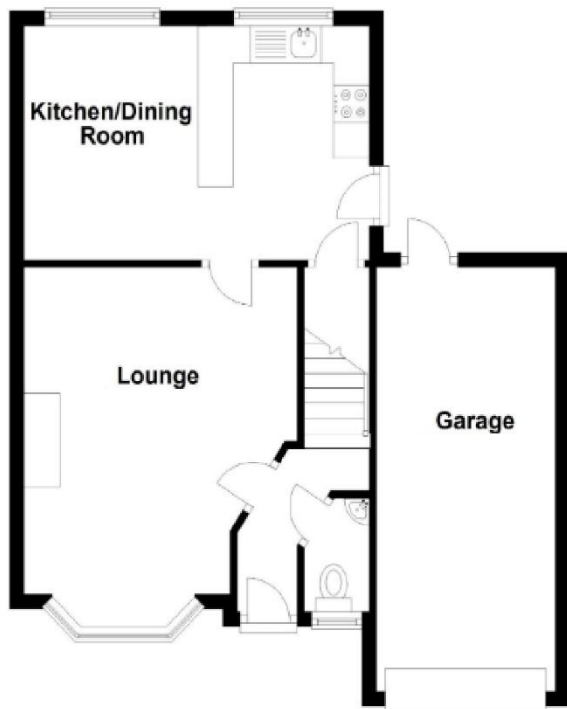
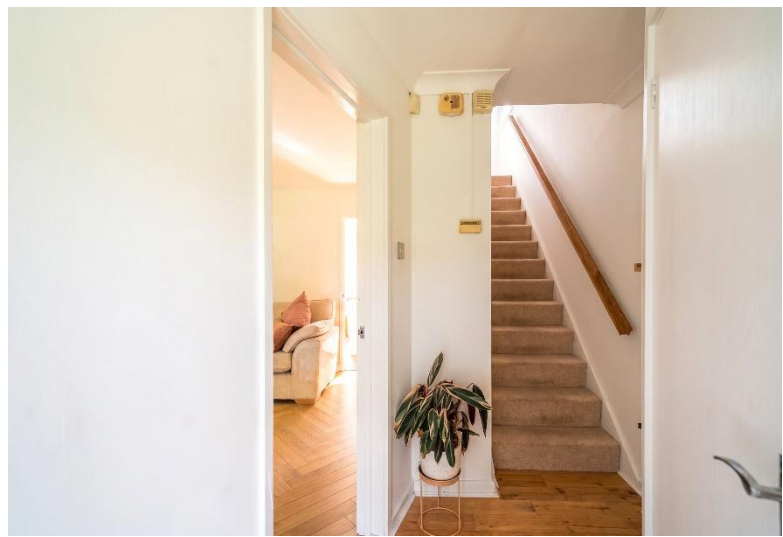
Garage - 5.5m x 2.5m (18'0" x 8'2")

### Tenure

We are advised by the vendor that the property is freehold. We would advise all interested parties to obtain verification through their own solicitor or legal representative

EPC supplied by vendor

Current council tax band – E



316 Stratford Road  
Shirley  
Solihull  
B90 3DN

[www.smart-homes.co.uk](http://www.smart-homes.co.uk)  
0121 744 4144

Agents Note: Whilst every care has been taken to prepare these particulars, they are for guidance purposes only. We believe all information to be correct from the day of marketing however, we advise and recommend that your conveyancer and or surveyor verifies all information supplied. All measurements are approximate and are for general guidance purposes only and whilst every care has been taken to ensure their accuracy, they should not be relied upon and potential buyers are advised to recheck the measurements.