



smarthomes

Gayle Grove

Acocks Green, Birmingham

- A Well Maintained End of Terrace Property
- Three Bedrooms
- Good Sized Lounge & Extended Kitchen/Diner
- Rear Garden & Ample Driveway Parking

£215,000

Current EPC Rating - D
Current Council Tax Band - B



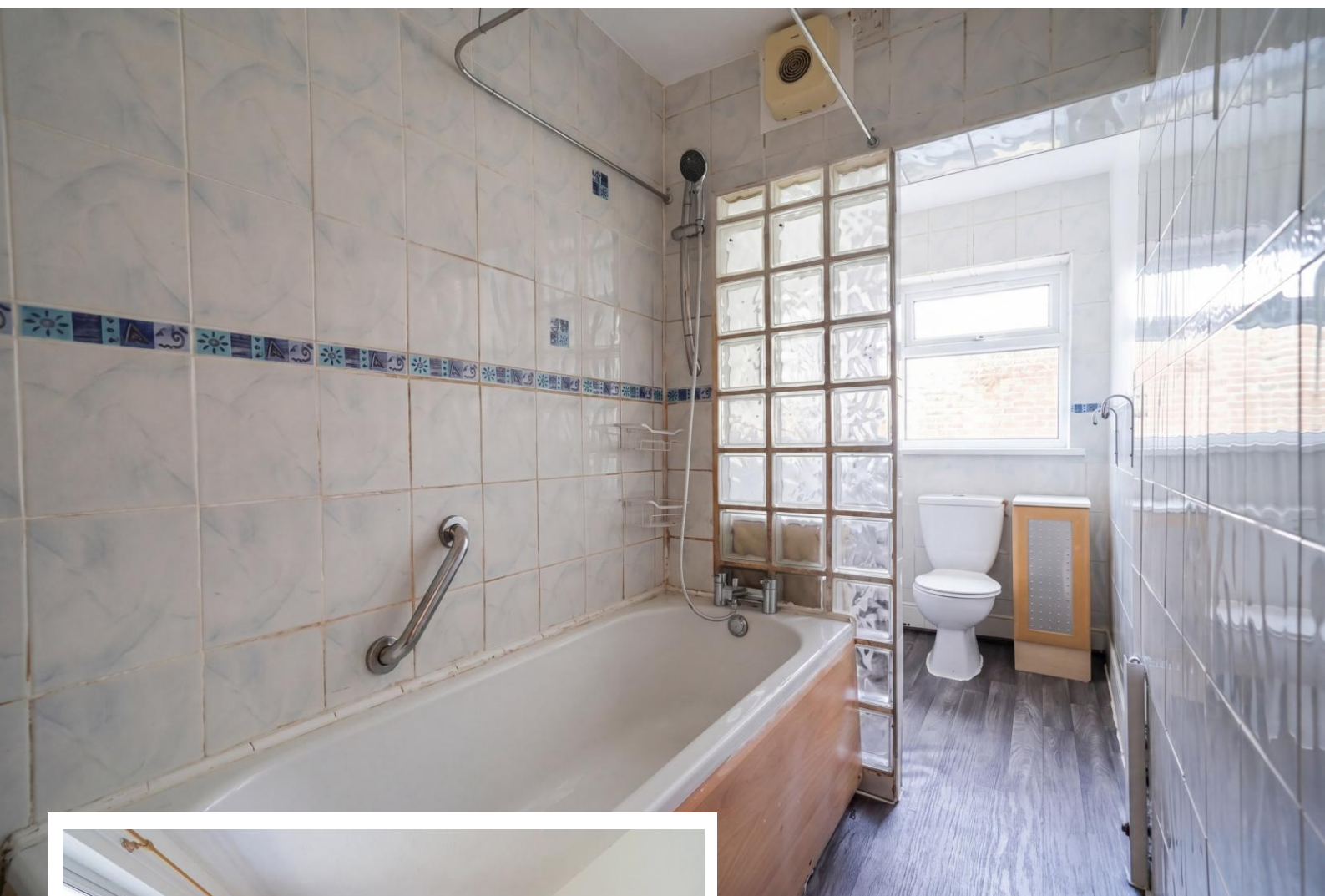


Property Description

A well maintained end-terrace family home offering accommodation comprising a spacious lounge, extended kitchen/diner, ground floor family bathroom, three bedrooms, rear garden and ample driveway parking

Tenure

We are advised by the vendor that the property is freehold, but are awaiting confirmation from the vendor's solicitor. We would advise all interested parties to obtain verification through their own solicitor or legal representative. EPC supplied by vendor. Current council tax band – B



Rooms & Measurements

Spacious Lounge to Front 4.83m x 4.14m (15'10" x 13'7")

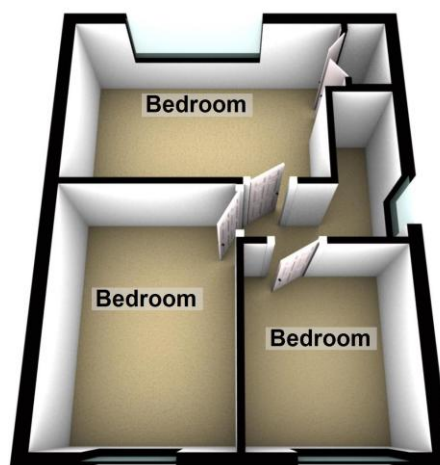
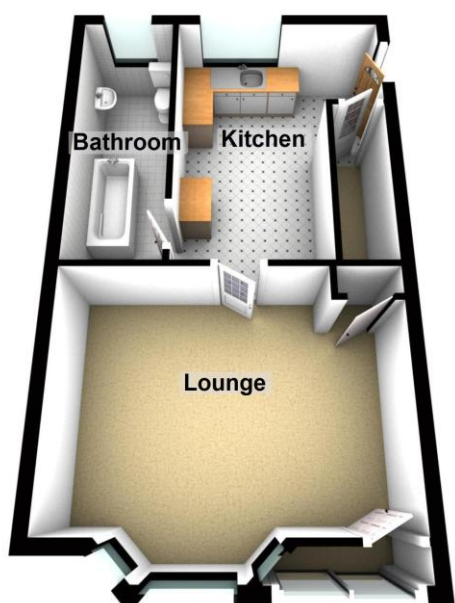
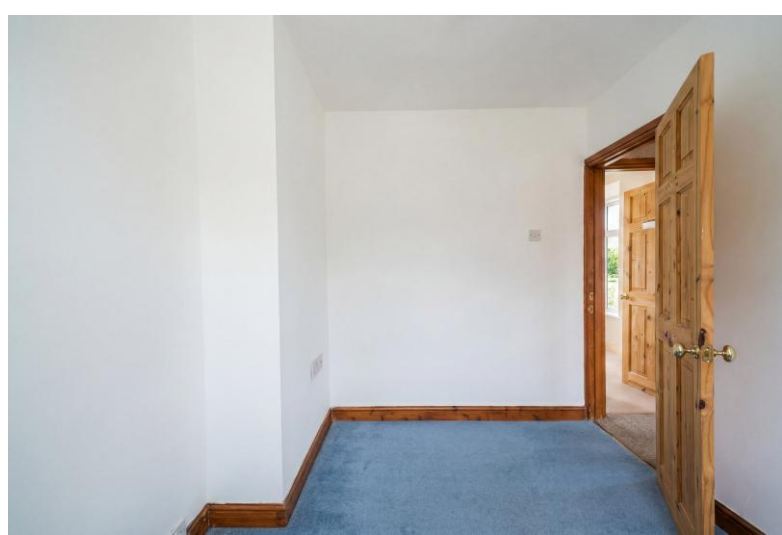
Extended Kitchen/Diner to Rear 4.27m x 3.35m max (14'0" x 11'0" max)

Ground Floor Family Bathroom to Rear 4.22m x 1.42m (13'10" x 4'8")

Bedroom One to Rear 3.94m x 2.64m (12'11" x 8'8")

Bedroom Two to Front 3.35m x 2.41m (11'0" x 7'11")

Bedroom Three to Front 2.34m x 2.29m (7'8" x 7'6")



316 Stratford Road
Shirley
Solihull
B90 3DN

www.smart-homes.co.uk
0121 744 4144

Agents Note: Whilst every care has been taken to prepare these particulars, they are for guidance purposes only. We believe all information to be correct from the day of marketing however, we advise and recommend that your conveyancer and or surveyor verifies all information supplied. All measurements are approximate are for general guidance purposes only and whilst every care has been taken to ensure their accuracy, they should not be relied upon and potential buyers are advised to recheck the measurements.