



smarthomes

Ralph Road
Shirley, Solihull

- A Beautifully Presented & Extended Semi-Detached Property
- Three Bedrooms
- Superb Extended Open Plan Lounge/Kitchen/Diner
- Re-Fitted Four Piece Family Bathroom

OIRO £440,000

Current EPC Rating - D
Current Council Tax Band - D

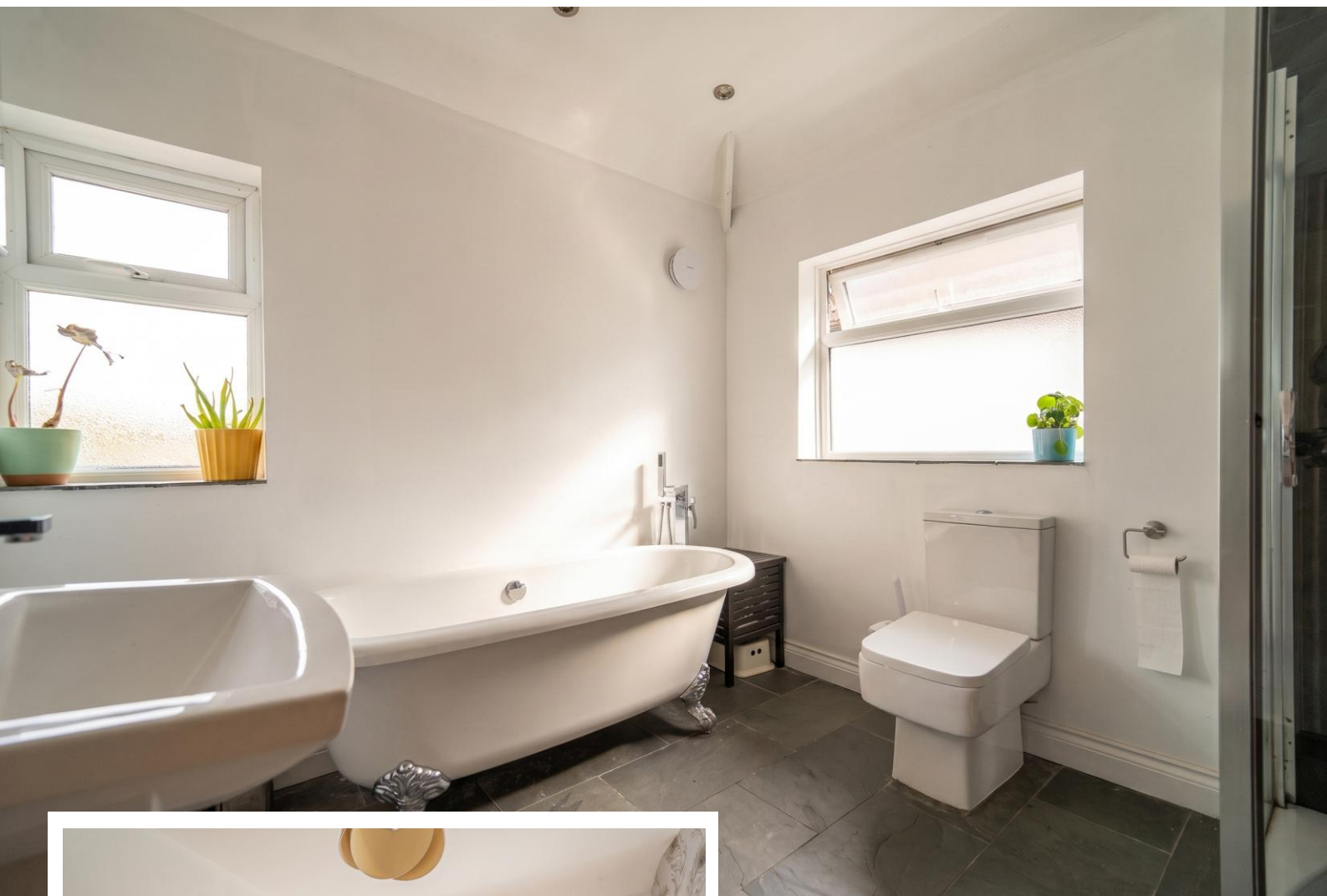




Property Description

A beautifully presented and extended semi-detached family home situated in a most popular location. Offering accommodation comprising a superb extended open plan family kitchen/diner, lounge, home office, utility, guest W.C., re-fitted four piece family bathroom, Southerly facing rear garden and driveway parking

Shirley is home to a host of leisure and retail facilities. For shopping, Sears Retail Park and Parkgate are packed with an array of popular major retail names, and Shirley high street has a good variety of independently run outlets. Just minutes away you can enjoy the convenience of gymnasiums along with a choice of large supermarkets like Asda, Sainsburys, Aldi and Tesco. Food lovers are spoilt for choice, within walking distance there is a diverse mix of cultural tastes to experience, from fine dining restaurants through to numerous cafés and bars. Streetsbrook Infant School is within walking distance to the property and Sharmans Cross and other schools include Blossomfield Infant and Nursery School, Haslucks Green Junior School, Our Lady of the Wayside Catholic Primary School, Tudor Grange Primary Academy St James, Light Hall Secondary School, Tudor Grange Academy and Alderbrook School and Sixth Form to name but a few. Commuters are particularly served well, with regular bus and train services and easy access to Junction 4 of the M42.



Rooms & Measurements

Superb Extended Open Plan Family Kitchen/Diner & Lounge
12.5m max x 6.91m max (41'0" max x 22'8" max)

Utility Room 2.82m x 1.27m (9'3" x 4'2")

Guest W.C

Home Office to Front 3.56m x 2.44m (11'8" x 8'0")

Bedroom One to Front 4.55m x 2.95m (14'11" x 9'8")

Bedroom Two to Rear 3.68m x 3m (12'1" x 9'10")

Bedroom Three to Front 2.29m x 1.65m (7'6" x 5'5")

Re-Fitted Family Bathroom

Tenure

We are advised by the vendor that the property is freehold. We would advise all interested parties to obtain verification through their own solicitor or legal representative. EPC supplied by vendor. Current council tax band – D



316 Stratford Road
Shirley
Solihull
B90 3DN

www.smart-homes.co.uk
0121 744 4144

Agents Note: Whilst every care has been taken to prepare these particulars, they are for guidance purposes only. We believe all information to be correct from the day of marketing however, we advise and recommend that your conveyancer and or surveyor verifies all information supplied. All measurements are approximate and are for general guidance purposes only and whilst every care has been taken to ensure their accuracy, they should not be relied upon and potential buyers are advised to recheck the measurements.