



## Plot 2 Sansome Court, Solihull, B90 2BH

£575,000

Sansome Court is an exclusive development of just eight homes in the sought-after area of Solihull, comprising seven semi-detached houses and one detached property. Plot 2 is a stylish three-storey semi-detached home, built by the renowned HCD Developments and finished to a high specification throughout. The ground floor offers a contemporary open-plan kitchen and lounge, along with a convenient W.C. On the first floor are two well-proportioned bedrooms and a modern family bathroom, while the top floor is dedicated to a spacious principal bedroom featuring a dressing room and ensuite. A fantastic opportunity to acquire a high-quality new build home in a prime location, get in touch to find out more.

**Bedrooms:** 3 | **Bathrooms:** 2 | **Receptions:** 1

**Property Type:** Semi Detached House

**Bedrooms: 3 | Bathrooms: 2 | Receptions: 1**

Sansome Court is an exclusive new development of just eight thoughtfully designed homes, comprising seven semi-detached houses and one detached residence, set in the highly sought-after area of Solihull.

Plot 2 is an exceptional three-storey semi-detached home, offering contemporary living with an impressive specification throughout. Built by the renowned HCD Developments, this property combines quality craftsmanship with stylish, modern design.

The ground floor features a stunning open-plan kitchen and lounge area, complete with bi-fold doors that flood the space with natural light, creating a bright, spacious, and airy feel, perfect for both everyday living and entertaining. A convenient W.C. completes the ground floor. On the first floor, there are two well-proportioned bedrooms and a sleek family bathroom. Occupying the entire top floor is a luxurious principal bedroom suite, complete with a dressing room and a beautifully appointed ensuite.

Externally, the property benefits from off-road parking, an EV charging point, and a private garden, ideal for relaxing or entertaining outdoors.

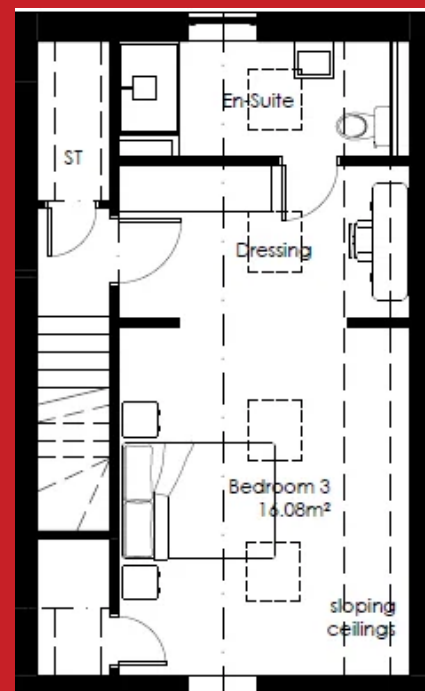
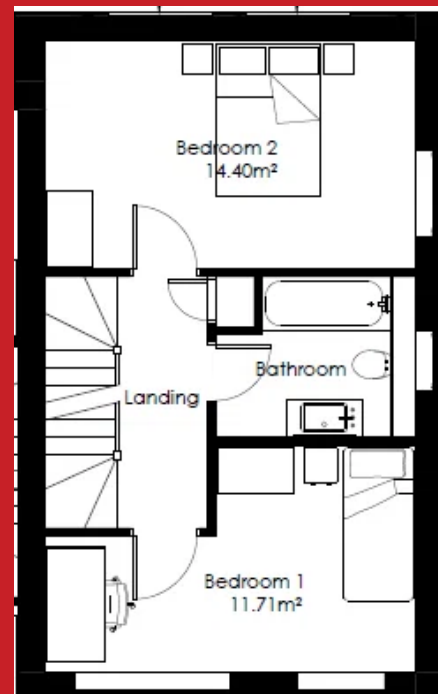
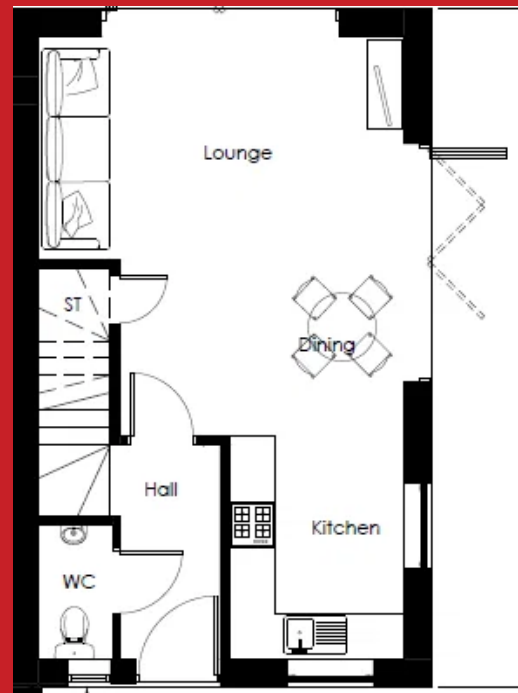
Ideally positioned, Sansome Court enjoys excellent access to Solihull town centre, with a wide range of shops, restaurants, and amenities, as well as highly regarded local schools and superb transport links, including the M42, Birmingham city centre, and nearby train stations.

This development is perfectly suited to a variety of buyers, including growing families, professional couples, and downsizers seeking a stylish, low-maintenance home in a prime location.

A rare opportunity to secure a beautifully finished new build home, designed for modern living.

Get in touch today to find out more and reserve a plot.

**DISCLAIMER** Please note images used are either CGI's and from a previous development built by HCD.





**Contact us today!**  
0121 744 4144 + Option 3  
[newhomes@smart-homes.co.uk](mailto:newhomes@smart-homes.co.uk)

