



smarthomes

Highfield Road Hall Green, Birmingham

- A Very Well Presented Five Double Bedroom Bungalow
- Modern Kitchen/Diner & Spacious Lounge
- South Facing Rear Garden
- Two En-Suite Bathrooms & Family Bathroom

£500,000

Current EPC Rating - D
Current Council Tax Band - D



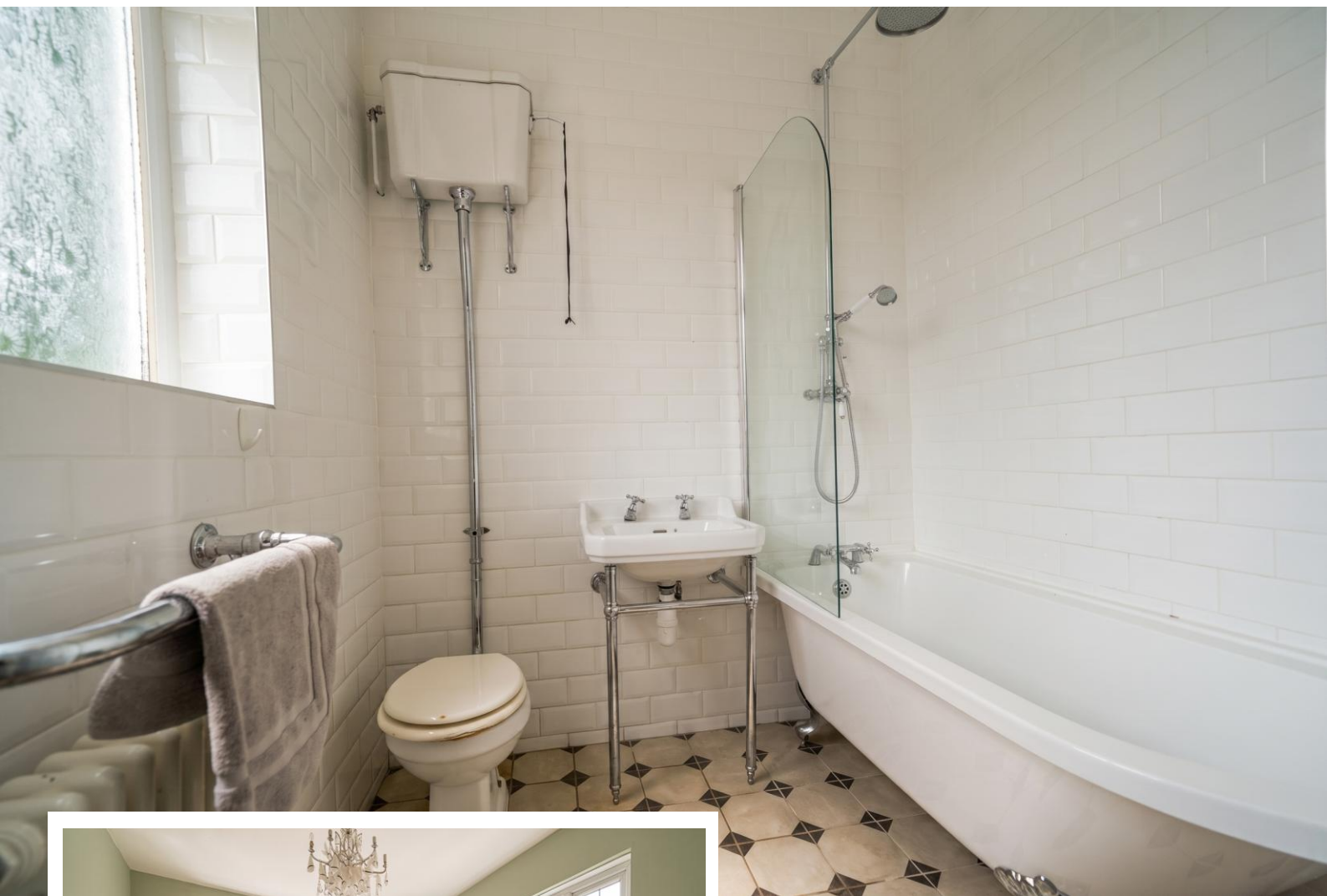


Property Description

A very well presented and extended detached bungalow situated in a most convenient location. Offering accommodation comprising a superb extended family kitchen/diner, spacious lounge, five double bedrooms, two en-suite bathrooms, family bathroom, South facing rear garden and ample driveway parking

Tenure

We are advised by the vendor that the property is freehold. We would advise all interested parties to obtain verification through their own solicitor or legal representative. EPC supplied by Nigel Hodges. Current council tax band – D



Rooms & Measurements

Spacious Lounge to Rear 5.4m x 3.9m (17'8" x 12'9")

Superb Dual Aspect Re-Fitted Family Kitchen/Diner 7.7m max x 7m max (25'3" max x 22'11" max)

Bedroom One to Rear 3.4m x 3.2m (11'1" x 10'5")

En-Suite Bathroom to Rear

Dual Aspect Bedroom Two 4.7m x 4.2m (15'5" x 13'9")

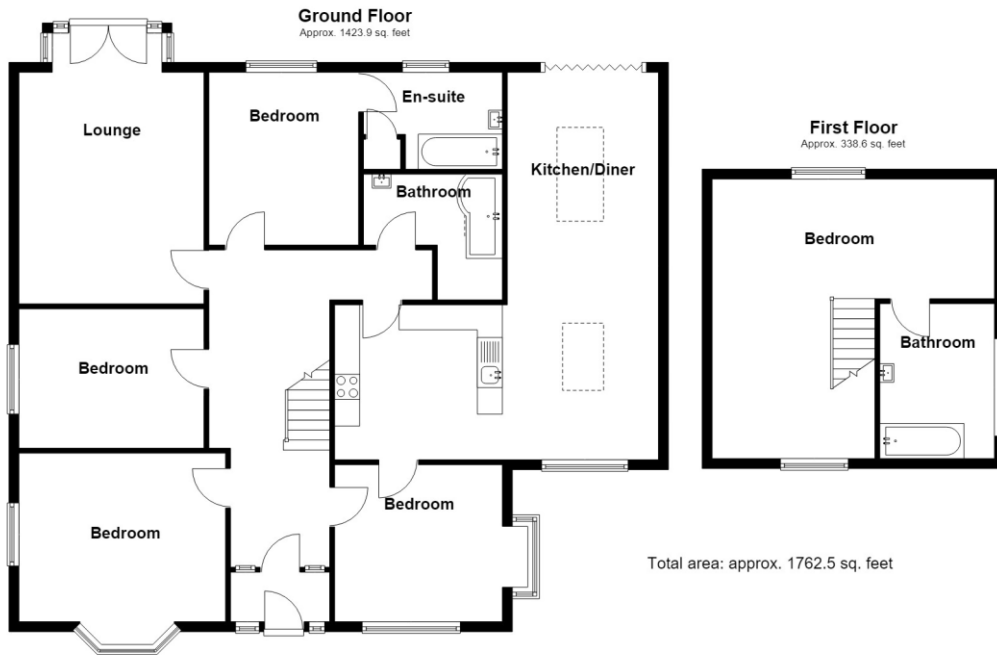
Dual Aspect Bedroom Three 4.4m x 3.2m (14'5" x 10'5")

Bedroom Four to Side 3.9m x 2.7m (12'9" x 8'10")

Re-Fitted Family Bathroom 2.6m x 2.2m max (8'6" x 7'2" max)

First Floor Bedroom Five 7.3m max x 6.3m max (23'11" max x 20'8" max)

En-Suite Bathroom 2.7m x 1.9m (8'10" x 6'2")



316 Stratford Road
Shirley
Solihull
B90 3DN

www.smart-homes.co.uk
0121 744 4144

Agents Note: Whilst every care has been taken to prepare these particulars, they are for guidance purposes only. We believe all information to be correct from the day of marketing however, we advise and recommend that your conveyancer and or surveyor verifies all information supplied. All measurements are approximate are for general guidance purposes only and whilst every care has been taken to ensure their accuracy, they should not be relied upon and potential buyers are advised to recheck the measurements.